



Build Healthy  
Places Network

# Opportunities for Public Health and Community Development in Uncertain Times

Presentation for County Health Executive Association of California  
Wed October 1st, 2025

# The Build Healthy Places Network

We are the national center at the intersection of **community development and health**, leading a movement to accelerate investments and speed and spread solutions for building healthy and prosperous communities.



Engage



Educate



Synthesize

# Vital Conditions for Well Being



Thriving Natural World



Basic Needs for Health & Safety



Humane Housing



Meaningful Work & Wealth



Lifelong Learning



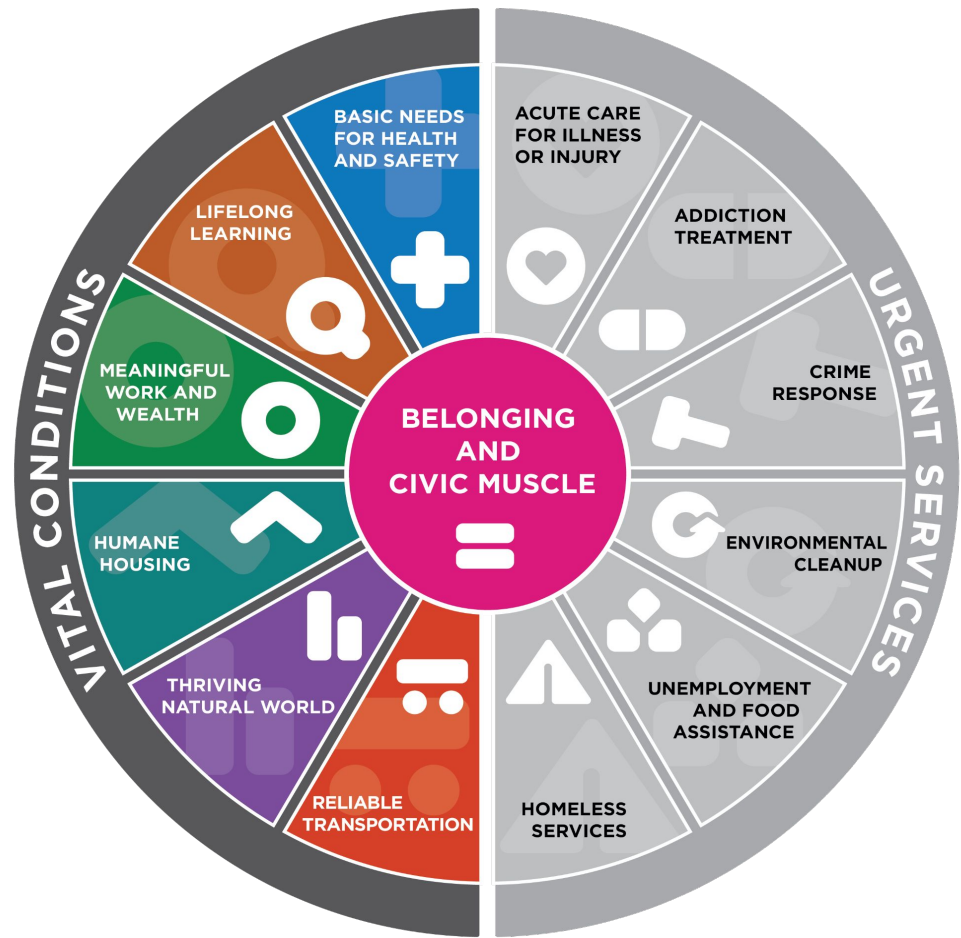
Reliable Transportation



Belonging & Civic Muscle



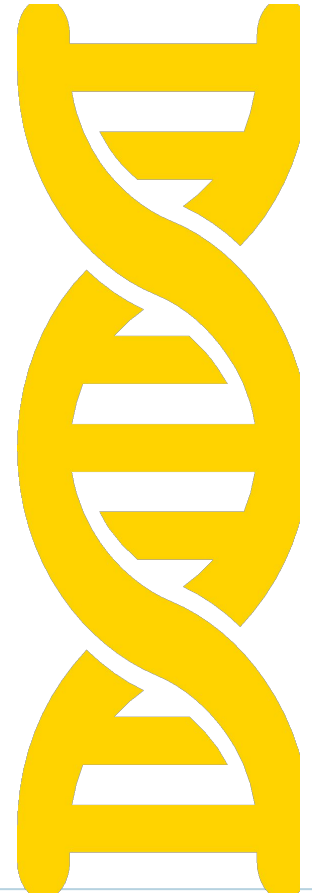
**Urgent services alone,  
will not produce  
thriving.**



Source: Milstein, B. et al, Health Affairs, Feb 2023

Community Development creates health in neighborhoods

48314 >





# COMMUNITY DEVELOPMENT IS IN THE ZIP CODE IMPROVEMENT BUSINESS



# MATURE SECTOR WITH LARGE SCALE INVESTMENTS

Over **\$450 BILLION DOLLARS**  
(industry assets)

## Federal/State Tax Credits & Grants

- Low Income Housing Tax Credit (LIHTC)
- New Markets Tax Credit (NMTC)
- Community Development Block Grants (CDBG)
- Healthy Food Financing Initiative (HFFI)

## Community Reinvestment Act (CRA) Dollars

- CRA-motivated loans and investments from private, for-profit banks

# CDFIs

Community Development Finance Institutions



DreamSpring



LOW INCOME INVESTMENT FUND



NATIVE COMMUNITY CAPITAL

CHEAC 2025

# CDCs & Housers

Community Development Corporations



STEWARDS OF AFFORDABLE HOUSING FOR THE FUTURE

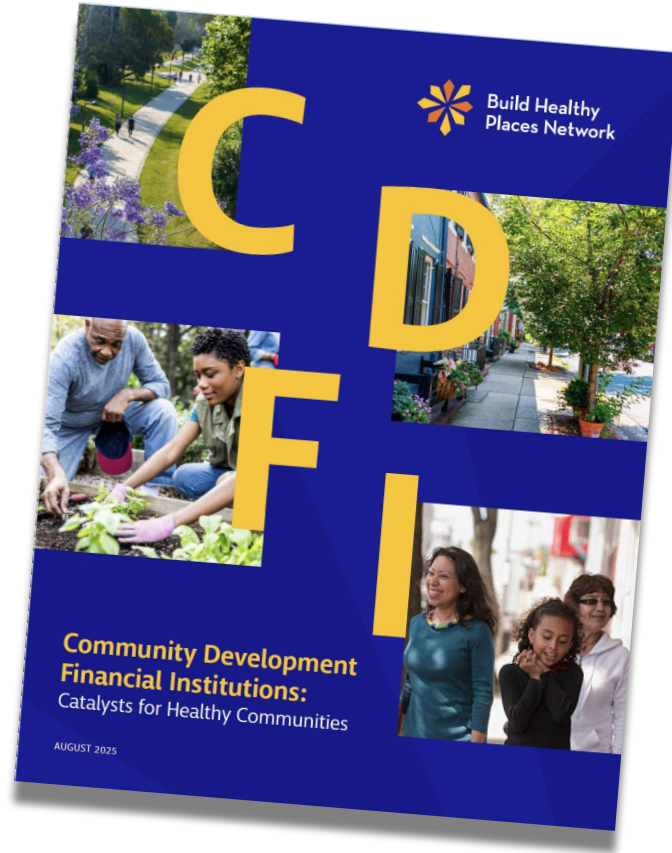


VIRGINIA COMMUNITY VOICE



Build Healthy Places Network






# THE OPPORTUNITY


*Multisector partnerships leveraging assets and jointly investing in vital community infrastructure, creating health and prosperity for all*




# Public Health Primer: Intersection of Community Development and Public Health

A partnership between

 Build Healthy Places Network

 NATIONAL ASSOCIATION OF CHRONIC DISEASE DIRECTORS

 Overview of Public Health Primer

Build Healthy Places Network (BHPN) and National Association of Chronic Disease Directors (NACDD) held a thought leader roundtable gathering national, state, and local leaders to bridge a way for public health and community development sectors to work together advancing health and racial equity through upstream partnerships. This primer shares the recommendations emerging from our roundtable and illustrates opportunities for public health to advance racial equity goals through engagement with those responsible for helping to shape the built environment. Support for 'Public Health Primer: Engaging Community Development for Health Equity' was provided by NACDD and the Robert Wood Johnson Foundation.

A 2023 survey\* found that 81% of executives in public health agencies and 72% of state and local government public health employees believed addressing racism as a public health crisis should be part of their work. However, only 39% of those employees reported being highly engaged in such efforts.

This primer seeks both to create a starting point for the work and to challenge our perspectives of where

**Quick Links**

- [How Public Health Practitioners Can Expand the Vital Conditions Framework](#)
- [Get Acquainted with the Sectors](#)
- [Discover New Partners](#)

- Partnerships are a critical foundation for addressing the root causes of health inequities
- How public health and community development can join forces to advance health equity
- Case studies of successful multi-sector partnerships

# Vital Conditions for Well Being



Thriving  
Natural World



Basic Needs for  
Health & Safety



Humane  
Housing



Meaningful  
Work & Wealth



Lifelong  
Learning



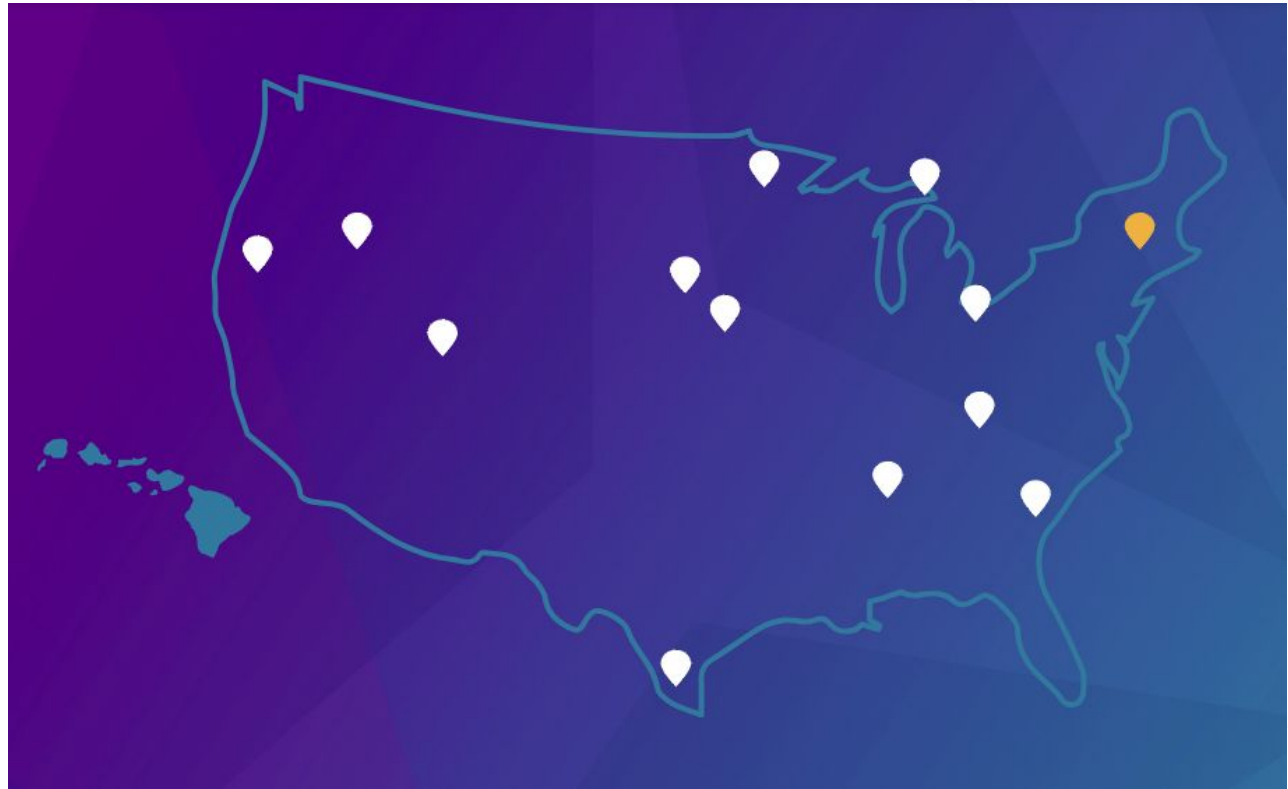
Reliable  
Transportation



Belonging &  
Civic Muscle



# New Hampshire



“Dartmouth - Hitchcock had to fill the missing link between where people live and where the hospital hoped they will come to work.”



# Dartmouth Health & Southwestern Community Services

## SCS Transportation program

- Creation of new bus route connecting two rural communities
- Bus route addresses transportation, workforce, healthcare access, and affordable housing needs
- Multi-sector partnerships allowed for blended funding

## Partnerships

- Southwest Community Services (Community Action Agency)
- Dartmouth Health (Health Care System)
- The Greater Sullivan County Public Health Advisory Council (Public Health)



Dartmouth Hitchcock  
Medical Center



# Public Health Partner's Role



## Convener, bringing together like minded community partners

- Public Health Advisory Council had monthly meetings created space for multi-sector partners to discuss shared goals and resource sharing.

## Data sharing (CHNA/CHIP)

Place image here

- The CHIP (Community Health Improvement Plan) prioritized transportation, bolstering mutual accountability of partners to address transportation as a shared risk with shared rewards.

## Socializing the idea of the Vital Conditions/SDOH

- Fostered shared trust and understanding that transportation is a vital condition affecting all multi-sector members.

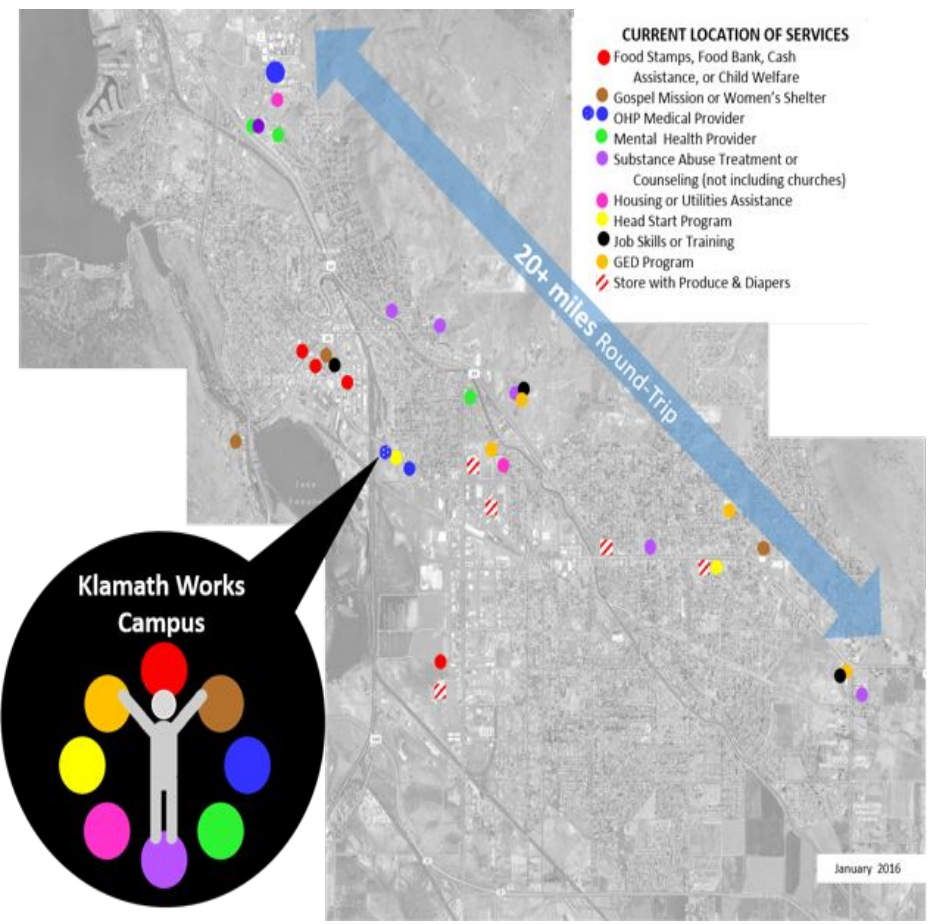
# Klamath Falls, Oregon

## Klamath Works Human Service Campus:

- 18 acre campus
- Hub for public and private social services providers.
- Co-locating services, encouraging coordination.

## Services on campus include:

- Klamath Falls Gospel Mission
- Link Access Center, a collaborative behavioral health and sobering center
- Klamath Works Job Training Program



**BASIC NEEDS FOR HEALTH & SAFETY AS A VITAL CONDITION** 

Hospital

- Medical screening physical or mental

Mission Gospels:

- Food and shelter

Link Access Center

- Intoxication & addiction support

**RELIABLE TRANSPORTATION AS A VITAL CONDITION** 

Co-localization of services within walking distance.

**BELONGING & CIVIC MUSCLE AS A VITAL CONDITION** 

Gospel Mission:

- Spaces of social connection
- Community garden, commercial kitchen, dining hall and chapel hall

Place image here

Link Access Center :

**MEANINGFUL WORK & WEALTH AS A VITAL CONDITION** 

• services

Klamath Works ; jobs program with coaching and individualized plans



## Public Health Partner



- County Certified Community Behavioral Health Clinic (CCBHC)
- Local Mental Health Authority in Klamath
- Works with Oregon Health Authority to manage mental health facilities in the county.
- Diverse range services for adults and children, 24-hour crisis support, mental health assessments, psychiatric assessments and medication management.



- Convenor
- Purchased land, land swap
- Social capital, fund raising



- Venue for social connection
- Community garden, Commercial kitchen

Cross sector partnership community orgs collaborate on common vision: **restoring self worth & dignity**

- **Co-localization and coordination of services**
- Social capital and fund raising diversification
- Culturally responsive services



- Runs Link Access Center
- Addiction & mental health
- Healthcare plan enrollment
- Housing referrals

# Community Development Project Examples



## Omaha, Nebraska

Family housing with downstairs in-law units



## Coatesville, Pennsylvania

Affordable senior housing above a community clinic