

# Maximizing the Opportunity for New Health Equity Infrastructure:

## Building California's Equity Officer Movement

October 5, 2023



# BARHII RAPID RESPONSE AND ROLLING RECOVERY: Building the Equity Officer Model in California



# LAUNCH OF BARHII BAY AREA REGIONAL EQUITY OFFICER NETWORK



**Alegría De La Cruz** | Chief Equity Officer, Sonoma County



**Analilia Garcia** | Chief Equity & Inclusion Officer, Santa Clara County



**Jamillah Jordan** | Director, Marin County Office of Equity



**Zulma Maciel** | Inaugural Director, Office of Racial Equity at City of San José



**Shireen Malekafzali** | Chief Equity Officer, San Mateo County



**Kì-Nam Miller** | Equity Officer, MTC/ABAG



**Shina Robinson** | Resilience Hubs Manager, Asian Pacific Environmental Network (APEN)



**Gilbert Salinas** | Chief Equity Officer, Contra Costa Health Services, Contra Costa County

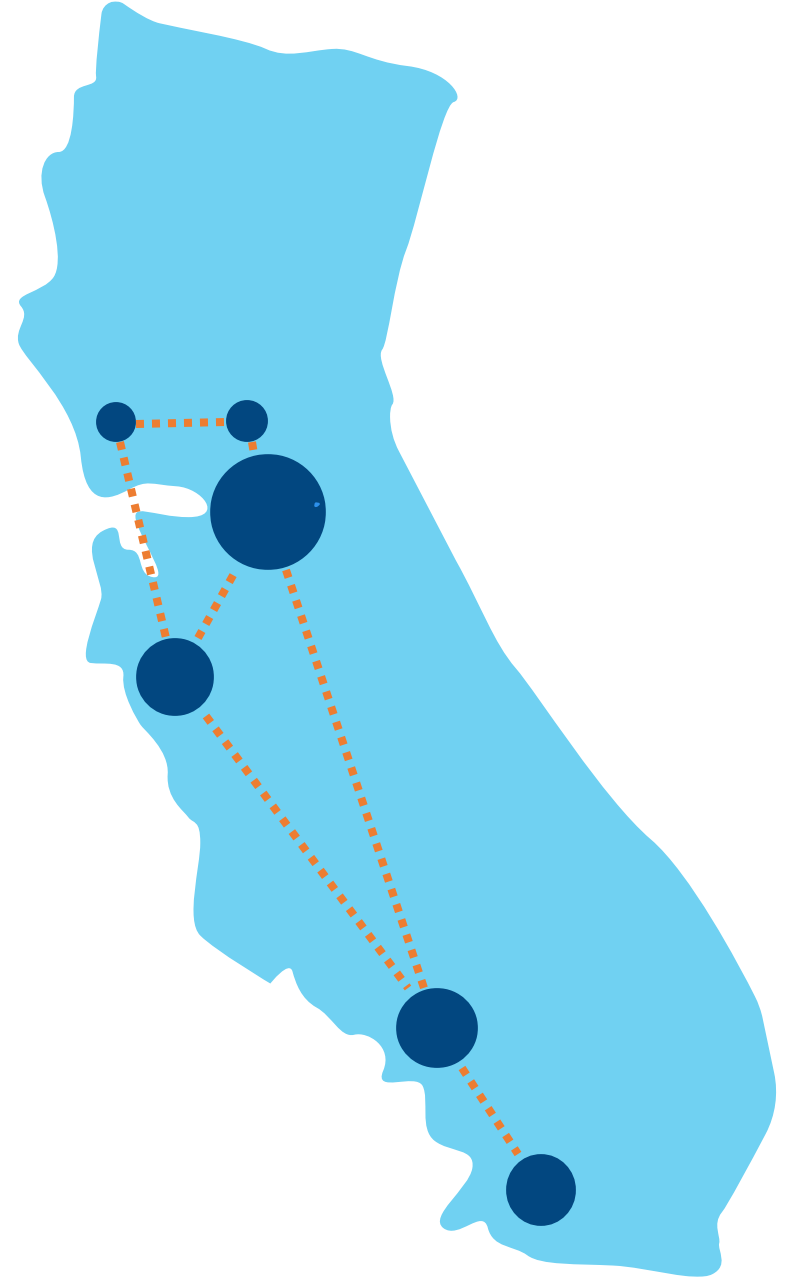


**Alvaro S. Sanchez** | Vice President of Policy, The Greenlining Institute



**Matt Wolff** | Climate and Health Program Manager, San Francisco Department of Public Health

# REGIONAL NETWORK EFFECT OF EQUITY OFFICER ROLES



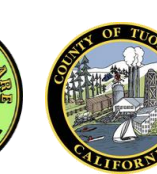


# CALIFORNIA'S LEADERSHIP IN THE HEALTH EQUITY MOVEMENT

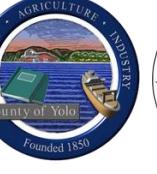
RANCHO



SJV



GREATER SAC



SOUTHERN CA



BAY AREA





**SHOWCASE WEB EVENTS**

Spotlight models and best practices from across California and country



**WATER COOLER SESSIONS**

Post web events, informal small group discussions that provided customized implementation support on the issues equity leads want to discuss most



**DATA VISUALIZATION FOR EQUITY SERIES**

Three part training on making data easy to understand



**EQUITY PROGRAM DESIGN SPECIAL SESSIONS**

Timely sessions on setting up evaluations for your equity efforts and on planning for the needs of small populations

217

**UNIQUE INDIVIDUALS**  
have engaged in the series

recruiting with equity

Data  
Visualization  
with a DEI  
lens

rural  
approaches

flexible  
funding

budget  
equity  
tools

OPERATIONALIZING  
EQUITY

programming  
for equity

TRANSFORMATIVE COMMUNITY  
PARTNERSHIPS

equity-centered  
workforce

BUILDING INTERNAL EQUITY  
INFRASTRUCTURE

COMMUNITY-DRIVEN  
INVESTMENTS

# October Learning Opportunities

## Five Offerings

### Water Cooler Series

- ***We're All In This Together: How Small, Rural Counties can Leverage its Size to Drive Broad Health Equity Impacts***  
Friday, October 6 10am – 11am PDT | Yolo
- ***Data Equity: Leveraging Public Health Data to Build a Cross-Sectoral Health Equity Table***  
Friday, October 13 11am – 12pm PDT | Humboldt
- ***From Public Health to County Equity Officer: A Pathway to Scale Equity and System Transformation***  
Wednesday, October 18 10am – 11am PDT | Santa Clara
- ***Reflections on BARHII's "A Whole-of-Government Approach" Convening: Special Post-Convening Session for the GARE Network***  
Thursday, October 26 10am – 11am PDT | BARHII

### Program Design Workshop

***Measuring Equity Impacts:  
Integrating an Anti-Racist Results Based  
Accountability (RBA) Framework***

Wednesday, October 25 12:30pm – 2pm PST  
Equity + Results

# November Learning Opportunities

*(dates announced a month before)*

## Statewide Web Event

**November (date TBD)**

**Topic:** Partnering with Philanthropy

**Potential guest speakers (tbd):**

- Invest Appalachia
- Rippel Foundation
- Center for Community Transformation (CTC)
- Fresno Community Health Improvement Plan (FCHIP)

**Moderator:** Melissa Jones

## Post-Convening Water Cooler Series

- **Impact Investing** *date tbd*  
Invest Appalachia (*tbd*)
- **Shaking up Your Community Needs Assessment** *date tbd*  
Center for Community Transformation (*tbd*)
- **Reflections on "Partnering with Philanthropy" Convening: Special Post-Convening Session for the GARE Network**  
*date tbd*  
BARHII or peer lead

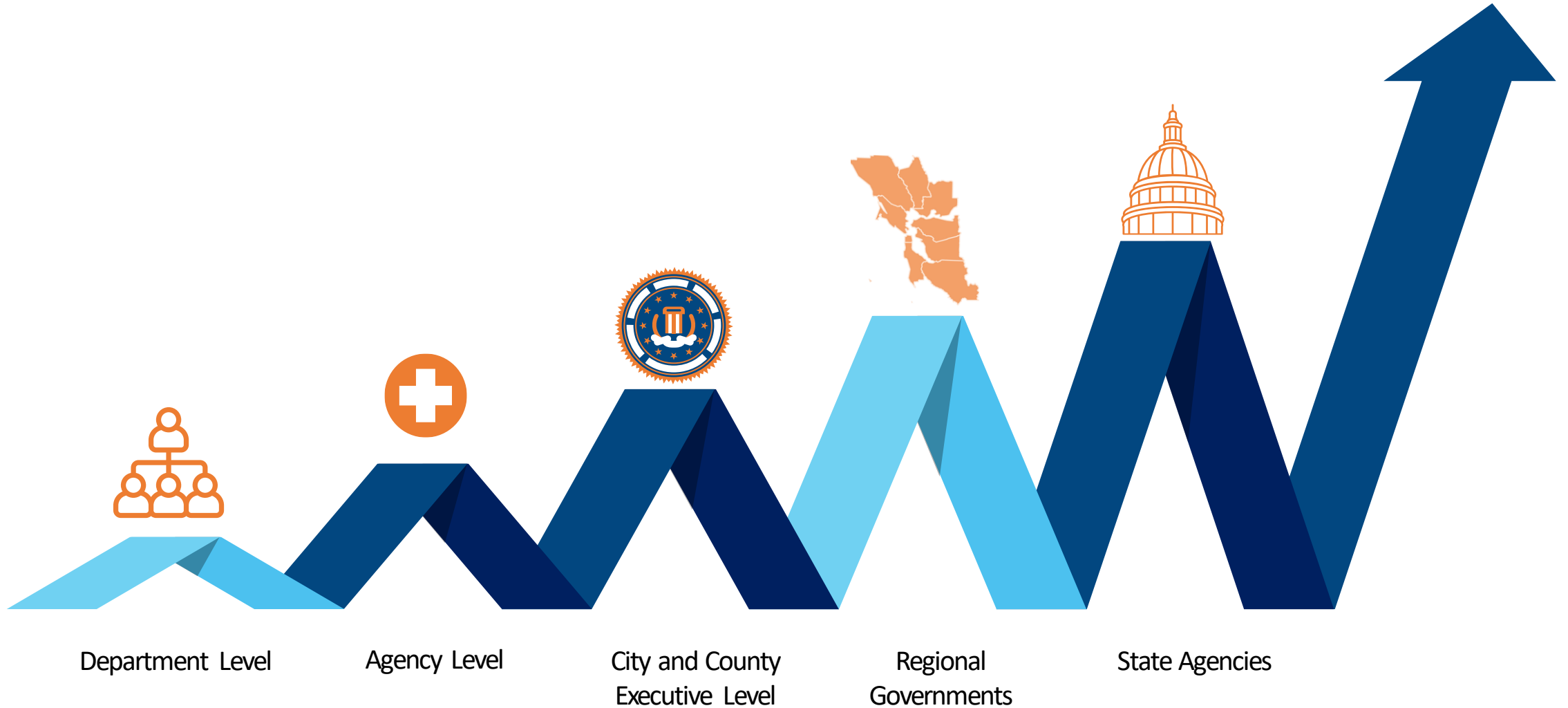
## Program Design Workshop

**Data Analysis for Small Populations**

Date TBD  
Trainer: TBD



# A WHOLE-OF-GOVERNMENT SHIFT



# THE POTENTIAL OF EQUITY OFFICER ROLES IN GOVERNMENTAL PUBLIC HEALTH





Melissa Jones  
Executive Director  
[mjones@barhii.org](mailto:mjones@barhii.org)



Matt Vander Sluis  
Managing Director, Policies & Programs, Bay Area  
[mvandersluis@barhii.org](mailto:mvandersluis@barhii.org)

Thank  
you!

