



2019 CHEAC Annual Meeting

Strengthening the Public Health Infrastructure



 The Westin, Pasadena
October 9 – 11, 2019

[#2019CHEACAM](https://twitter.com/2019CHEACAM)

PRESIDENT'S WELCOME



Dear 2019 CHEAC Annual Meeting Attendees,

On behalf of the CHEAC Executive Committee, the Annual Meeting Planning Committee, and Staff, I am honored to welcome you to the 2019 CHEAC Annual Meeting. We are pleased to once again offer an expanded meeting format with extended participation beyond each jurisdiction's CHEAC Member to others within the public health workforce. Our conference schedule includes broader, multidisciplinary perspectives on public health issues that impact all aspects of individual, population, and community health.

This year's theme, Strengthening the Public Health Infrastructure, highlights the vital importance of local health departments and their capacity to deliver essential public health services. Our goal is to continue the forward momentum across California, made possible through new and innovative funding streams, expanded public health programs, and a reinvigorated workforce. Whether we live in rural or urban areas, the Sierras or Southern California, all of us share common public health challenges with other locations – regionally, nationally, and internationally. We look forward to providing an opportunity to look beyond our daily work and focus on emerging and cross-cutting public health issues, partnerships, and solutions. I sincerely hope this year's conference will energize and inspire you, as well as nurture alliances that further our shared goals toward a healthy and thriving California.

Yours in Health,

A handwritten signature in black ink, appearing to read 'Mimi Hall'.

Mimi Hall
CHEAC President

AGENDA AT-A-GLANCE

WEDNESDAY, OCTOBER 9

8:00 am – 9:00 am	Continental Breakfast	Fountain I-III
9:00 am – 10:30 am	Opening Plenary – Southern California Welcome <ul style="list-style-type: none"> • Dr. Ying-Ying Goh, City of Pasadena • Dr. Barbara Ferrer, Los Angeles County • Director Kelly Colopy, City of Long Beach 	Fountain I-III
10:45 am – 11:45 am Breakout #1	A Public Health Approach to Advancing Early Care and Education	Fountain IV
	Advancing Health Equity Within Public Health Practice	San Marino
	Aligning Criminal Justice Approaches with Local Public Health Objectives in Treating Opioid Addiction	San Rafael
12:00 pm – 1:30 pm	Lunch Plenary – Conversation with CHHS Secretary Ghaly <ul style="list-style-type: none"> • Secretary Mark Ghaly, MD, MPH, California Health & Human Services Agency 	Fountain I-III
1:45 pm – 2:45 pm Breakout #2	Improving Capacity for Public Health Laboratories in California	Fountain IV
	Lessons Learned from SJVPHC Regional Multi-Sector Collaboration Model	San Marino
	Continuous Improvement: “QI on QI” Project at the County of San Diego Public Health Services Department	San Rafael
3:00 pm – 4:00 pm Breakout #3	Just Culture: Building Capacity for Organizational Change	Fountain IV
	All Children Thrive California: Fostering Health by Building Resilient Communities	San Marino
	Emergency Risk & Public Health Communication: Utilizing a Partner Relay to Share Information with Limited English-Proficient Populations	San Rafael
5:00 pm – 6:30 pm	Reception	1 st FLR Courtyard
6:30 pm – 8:30 pm	New Member Dinner (Invite Only - Blue Dot)	Ventanas Restaurant

AGENDA AT-A-GLANCE

THURSDAY, OCTOBER 10

8:00 am – 9:00 am	Continental Breakfast	Fountain I-III
9:00 am – 10:30 am	Plenary – The Impact of Racism and Bias on Maternal and Infant Health <ul style="list-style-type: none"> • Kimi Watkins-Tartt, Alameda County (Facilitator) • Melissa Franklin, Growth Mindset Communications • Dr. Meredith Merchant, Licensed Psychologist • Wenonah Valentine, iDREAM for Racial Health Equity 	Fountain I-III
10:45 am – 11:45 am Breakout #4	Systems Change: Imagining, Implementing and Integrating Prevention and Intervention of Gender-Based Violence into the Vision of Los Angeles County's Department of Public Health	Fountain IV
	Informed Data: How to Create a Community Level Health and Well-Being Data System	San Marino
	Making Sense of the Dollars and Cents: CHEAC Fiscal Forum	San Rafael
12:00 pm – 1:00 pm	Networking Lunch	Fountain I-III
1:15 pm – 2:45 pm Breakout #5	CHEAC Small County Committee	Fountain IV
	CHEAC Suburban LHD Roundtable	San Marino
	CHEAC Urban LHD Roundtable	San Rafael
3:00 pm – 4:30 pm	Plenary – Infectious Disease Prevention and Control: The New York City Experience <ul style="list-style-type: none"> • Dr. Jennifer Rosen, New York City Department of Health and Mental Hygiene 	Fountain I-III
4:45 pm – 6:45 pm	CHEAC Executive Committee Meeting	Busch Boardroom
7:00 pm – 9:00 pm	CHEAC Member-Only Dinner (Invite Only - Orange Dot)	Fountain I-II

AGENDA AT-A-GLANCE

FRIDAY, OCTOBER 11

8:00 am - 8:45 am	Continental Breakfast	Fountain III
9:00 am - 12:00 pm	CHEAC General Membership Business Meeting	Fountain I-II



PLENARY SPEAKERS

Opening Plenary – Southern California Welcome

Wednesday, October 9 | 9:00 am-10:30 am | Fountain I-III

With over 10 million residents, Los Angeles County, including the cities of Pasadena and Long Beach, is one of the most populated, diverse, and complex jurisdictions in the country. Home to two of the three city health departments in California, the county features a unique working relationship with Pasadena and Long Beach health departments, requiring collaboration to preserve and promote the public's health in this expansive jurisdiction. To welcome you to Pasadena and the 2019 CHEAC Annual Meeting, join us in a conversation about engaging with local jurisdictions, delivering critical public health services, and addressing the complex and diverse needs of residents.



Dr. Ying-Ying Goh
City of Pasadena

Dr. Ying-Ying Goh serves as the City of Pasadena's Director of Public Health and Health Officer, responsible for the overall planning, administration, and operation of the Pasadena Public Health Department. Prior to her appointment as the Director of Public Health, Dr. Goh served in numerous capacities at the Pasadena Public Health Department, including as the city's Health Officer/Deputy Director and the Medical Director for Programs and Research. Dr. Goh earned her medical degree at Stanford University and a master's degree in health services research from the UCLA Fielding School of Public Health.

PLENARY SPEAKERS

Dr. Barbara Ferrer is a nationally known public health leader with over 30 years of experience as a philanthropic strategist, public health director, educational leader, researcher, and community advocate. Dr. Ferrer currently serves as the Director of the Los Angeles County Department of Public Health, promoting health among the county's residents and overseeing a staff of over 4,000. Dr. Ferrer previously served as the Chief Strategy Officer for the W.K. Kellogg Foundation, as well as the Executive Director of the Boston Public Health Commission. Dr. Ferrer earned her PhD in Social Welfare from Brandeis University, a master's degree of arts in public health from Boston University, and a master's degree of arts in education from the University of Massachusetts, Boston.



Dr. Barbara Ferrer
County of Los
Angeles County

Ms. Kelly Colopy serves as the Director of the City of Long Beach Health & Human Services Department, overseeing a staff of 340 located in nine sites throughout the city. Ms. Colopy has over 30 years of experience working in federal, state, and local levels to design and implement systems and services that build health and well-being of families and individuals. Her previous roles include Network Director for Optum Salt Lake County, Utah, Associate Director for Salt Lake County Human Services and Community Services, and Research Director for the State of Utah Division of Substance Abuse. Ms. Colopy earned her master's degree in public policy from Duke University.



Kelly Colopy
City of Long Beach

PLENARY SPEAKERS

Conversation with California Health and Human Services Agency (CHHS) Secretary Ghaly

Wednesday, October 9 | 12:00 pm-1:30 pm | Fountain I-III



**Secretary
Mark Ghaly**
California Health
& Human Services
Agency

At the direction of Governor Gavin Newsom, the California Health and Human Services Agency (CHHS) has been tasked with a monumental effort of expanding health coverage and access to all Californians. The Newsom Administration's "California for All" approach has led to key developments in health coverage expansions, early childhood care and education initiatives, and emergency readiness, response, and recovery, among others. Join us for a conversation with CHHS Secretary Mark Ghaly for a reflection on the Administration's early accomplishments and a look ahead at future priorities of the Administration.

Dr. Mark Ghaly was appointed Secretary of the California Health and Human Services Agency by Governor Newsom in March 2019. In his role, Dr. Ghaly oversees California's largest state government agency which includes a number of departments tasked with the administration and implementation of critical public health, health, and social services programs and services.

In his role as Secretary, Dr. Ghaly works across state government, county, city, and private sector partners to ensure the most vulnerable Californians have access to the resources and services they need to lead healthy, happy, and productive lives.

PLENARY SPEAKERS

Prior to joining the Newsom Administration, Secretary Ghaly worked for 15 years in various county health leadership roles in San Francisco and Los Angeles, including in clinical, health services, and safety net system capacities. In San Francisco, Dr. Ghaly was the Medical Director of the Southeast Health Center, a clinic operated by the public health department's San Francisco Health Network. In Los Angeles, Dr. Ghaly served as the Deputy Director for Community Health and Integrated Programs for the Department of Health Services and the Director of Health and Social Impact, overseeing and establishing a number of critical programs, including the Los Angeles County Whole Person Care Pilot program, Drug Medi-Cal Organized Delivery System, the Office of Diversion and Reentry, and the Housing for Health Program.

Dr. Ghaly's prior clinical work within Los Angeles County included treating patients at the Los Angeles County Juvenile Detention System and the Martin Luther King Jr. Outpatient Center Medical Hub, serving children and youth within the Los Angeles County Child Welfare System.

Secretary Ghaly received his medical degree from Harvard Medical School and his Master of Public Health degree from the Harvard T.H. Chan School of Public Health. Dr. Ghaly completed his residency training in pediatrics at the University of California, San Francisco (UCSF).

PLENARY SPEAKERS

The Impact of Racism and Bias on Maternal and Infant Health

Thursday, October 10 | 9:00 am-10:30 am | Fountain I-III

Facilitator: Kimi Watkins-Tartt, Alameda County

Women in the United States are more likely to die from childbirth or pregnancy-related causes than other women in the developed world, a phenomenon that is disproportionately shouldered by black women. Pregnancy-related deaths have steadily increased in the U.S. since the 1980s, and, while California has experienced some promising declines, considerable racial disparities in morbidity and mortality exist. Join us for a panel discussion, facilitated by Alameda County Public Health Director Kimi Watkins-Tartt, with leaders, informed by lived experiences, working to reduce the impact of racism and bias on maternal and infant health outcomes through public health-informed leadership, training, advocacy, and empowerment.



Melissa Franklin
Growth Mindset
Communications

Melissa Franklin, MBA, is the Founder and CEO of Growth Mindset Communications, as well as a marketing and communications professional with over 25 years of experience. Ms. Franklin was recently awarded a Pritzker Fellowship on behalf of First 5 LA for her work in coordinating Los Angeles County's efforts to reduce black infant and maternal mortality rates through communications and countywide stakeholder engagement. Ms. Franklin is a black mother of two girls, now ages nine and 12, who were born severely premature, providing her a deep connection to the issue of maternal and infant health. She received her Master of Business Administration degree from Loyola Marymount University and is currently a doctoral candidate in organizational change and leadership at the University of Southern California.

PLENARY SPEAKERS

Dr. Meridith Merchant is a licensed psychologist, advocate, consultant, and speaker, currently serving as the Assistant Director of Mental Health Initiatives and Inclusion at the University of California, Santa Barbara Counseling and Psychological Services (CAPS). Dr. Merchant additionally serves as a faculty advisor and Community Health Advocate with iDREAM for Racial Health Equity, where she is focused on health equity and shaping the next generation of health advocates and professionals. She is also a member of the California Department of Public Health (CDPH) Maternal, Child, and Adolescent Health Division's California Community Birth Plan Task Force. Dr. Merchant received her doctorate from the California School of Professional Psychology.



Meridith Merchant
PhD, Licensed
Psychologist

Wenonah Valentine, MBA, is a 23-year health equity social entrepreneur and founder of iDREAM for Racial Health Equity, a project of Community Partners. Ms. Valentine develops social innovation in health leadership and workforce development through coaching and skill-building, peer learning, interprofessional education, and health literacy. She has a number of notable achievements throughout her career, including bridging communication with maternity medical providers, hospital community benefits programming, and local stakeholders, equipping a pipeline of five generations of community research ambassadors, cultural brokers, and social change leaders, and facilitating national public health initiatives. Ms. Valentine earned her Master of Business Administration degree in Business and Professional Leadership from Azusa Pacific University.



Wenonah Valentine
iDREAM for Racial
Health Equity

This plenary session is generously sponsored by the California Health Care Foundation (CHCF).

PLENARY SPEAKERS

Infectious Disease Prevention and Control: The New York City Experience Thursday, October 10 | 3:00 pm-4:30 pm | Fountain I-III



Jennifer Rosen
New York City
Department of
Health and Mental
Hygiene

California has been no stranger to outbreaks of vaccine-preventable diseases, including measles, influenza, and hepatitis, posing risks to the public's health and safety in many communities throughout the state. Notably, at the beginning of September 2019, the U.S. Centers for Disease Control and Prevention (CDC) indicated the United States' measles-elimination status, initially achieved in 2000, is in jeopardy of being rescinded by the World Health Organization (WHO) due to ongoing measles outbreaks in New York. Join us for this plenary featuring Dr. Jennifer Rosen from New York City as she details her on-the-ground experience and lessons learned in community engagement and infectious disease prevention and control.

Dr. Rosen is the Director of Epidemiology and Surveillance for the Bureau of Immunization at the New York City Department of Health and Mental Hygiene. In this role, she oversees and guides surveillance and epidemiologic analyses and leads investigations of measles and other vaccine-preventable diseases. Dr. Rosen also oversees the monitoring of compliance with immunization requirements in schools and daycares.

Prior to joining the New York City Department of Health, Dr. Rosen served as an Epidemic Intelligence Service Officer at the CDC's Respiratory Disease Branch, investigating outbreaks of infectious diseases. Dr. Rosen completed her medical residency in internal medicine at New York University (NYU).

WORKSHOPS

WEDNESDAY, OCTOBER 9
10:45 am - 11:45 am

A Public Health Approach to Advancing Early Care and Education

Fountain IV

Early Care and Education (ECE) is a fundamental strategy toward optimal child development and a crucial support system to assist family strengthening. This workshop will examine how the public health and ECE sectors can improve partnership and collaboration, as well as integrate their missions and functions to better meet common goals around child and family health and well-being.

Facilitator:

Robert Gilchick, Los Angeles County

Panelists:

Cristina Alvarado, Child Care

Alliance of Los Angeles

Megan Gunn, Fresno County

Alejandra Albarran Moses, City of Long Beach

Advancing Health Equity Within Public Health Practice San Marino

A systems approach—one that addresses the interrelationships of multiple factors—may create some of the biggest opportunities to achieve health, safety, and well-being, and reduce health inequities. This workshop will cover various health equity frameworks and highlight how local health departments have applied systems thinking to interweave health equity into public health infrastructure, engaged multiple entities to work together to “row in the same direction,” and addressed some of our state’s significant health challenges.

Facilitator:

Melissa Jones, BARHII

Panelists:

Jo-Ann Julien, San Diego County

La’Quana Williams, Prevention Institute

Stephanie Caldwell, Public Health

Alliance of Southern California

Aligning Criminal Justice Approaches with Local Public Health Objectives in Treating Opioid Addiction San Rafael

Information can change situations! Explore ways to tailor your jurisdiction’s approach to treating opioid use disorders in the criminal justice system to optimize how it also addresses public health objectives. Learn how to augment medication assisted treatment programs in jails and drug courts to target the public health needs of the populations at highest risk, including pregnant women, persons with HIV and Hepatitis C, persons sharing needles, and others.

Facilitator:

Shelly Davis, Siskiyou County

Panelist:

Donna Strugar-Fritsch, Health
Management Associates (HMA)

WORKSHOPS

WEDNESDAY, OCTOBER 9

1:45 pm – 2:45 pm

Improving Capacity for Public Health Laboratories in California

Fountain IV

Public health laboratories throughout California play a crucial function in state and local public health infrastructure, preparedness, and prevention. This workshop will review the capabilities and changing technological advances that allow local public health laboratories to assure comprehensive public health infrastructure and provide essential services.

Facilitator:

Megan Crumpler, Orange County

Panelists:

Katya Ledin, California Department of Public Health (CDPH)

Nicole Green, Los Angeles County

Syreeta Steele, San Diego County

Lessons Learned from the San Joaquin Valley Public Health Collaborative (SJVPHC) Regional Multi-Sector Collaboration Model

San Marino

Learn about a four-county Central Valley model for initiating regional multi-sector collaboration amongst local health departments and community-based stakeholders. Participants will walk away with a best practice example as well as a step-by-step model to: 1) initiate multi-sector collaboration across jurisdictions and 2) reach consensus for a focused project designed to set the stage for long-term collaboration.

Facilitator:

David Luchini, Fresno County

Panelists:

Sara Bosse, Madera County

Karen Elliott, Tulare County

Rebecca Nanyonjo, Merced County

Continuous Improvement: “QI on QI” Project at the County of San Diego Public Health Services Department

San Rafael

In addition to always facing resource constraints, local public health departments also have limited capacity to support and expand the very thing that is important to improving efficiencies—a quality improvement program. That is why the County of San Diego Health and Human Services Agency Department of Public Health Services created the “QI on QI Project,” deploying a QI approach to expanding technical support for QI across all of its seven Branches and measuring its impact on the quality of QI activity.

Facilitator:

Jackie Werth, San Diego County

WORKSHOPS

WEDNESDAY, OCTOBER 9

3:00 pm – 4:00 pm

Just Culture: Building Capacity for Organizational Change

Fountain IV

The Los Angeles County Health Agency, in strong collaboration with union partners, is in a pivotal stage in their Just Culture initiative – a commitment to establish a work environment that empowers staff in collective efforts to build healthy communities and improve health outcomes for all. This workshop will detail how the Los Angeles County Department of Public Health implemented a training curriculum, aligned internal practices and policies, and engaged staff at all levels of the organization to propel organizational culture change in support of health equity.

Facilitator:

Barbara Ferrer, Los Angeles County

Panelists:

Y. Silvia Shin, Los Angeles County

Maribel Castillon, Los Angeles County

Franklin Pratt, Los Angeles County

All Children Thrive California: Fostering Health by Building Resilient Communities

San Marino

Trauma has been identified as one of the most significant health issues facing California. It is well-documented that complex trauma impacts individuals, families and communities. All Children Thrive California (ACT-CA) is a transformative initiative that moves beyond trauma-informed services to creating healing systems. This “upstream” strategy focuses efforts on local infrastructure, systems, and policies to counter the effects of trauma, promote healing, and foster individual and community resilience.

Panelists:

Reggie Caldwell, Public Health Advocates

Kaytie Speziale, Public Health Advocates

Emergency Risk & Public Health Communication: Utilizing a Partner Relay to Share Information with Limited English Proficient Populations

San Rafael

Sharing information with Limited English Proficient (LEP) communities is a universal challenge. More than 400,000 San Diegans speak a language other than English at home and report that they speak English less than very well.

The San Diego County Public Health Services (PHS) and the County Office of Emergency Services (OES) collaborate on a project to improve communication with language-isolated communities during public health emergencies and natural disasters. This workshop will detail the formation of a “Partner Relay” network to disseminate information in various languages to communities during emergencies.

Panelists:

Justine Kozo, San Diego County

Laura Curvey, San Diego County

WORKSHOPS

Thursday, October 10
10:45 am - 11:45 am

Systems Change: Imagining, Implementing, and Integrating Prevention and Intervention of Gender-Based Violence into the Vision of Los Angeles County's Department of Public Health Fountain IV

Learn about the long-term collaborative work within Los Angeles County which has resulted in a clear recognition of the need to integrate public health responses to gender-based violence countywide, both internally and externally. Follow the journey of the systems change work needed to realize this goal with leadership of the Office of Women's Health, the Office of the Injury and Violence Prevention Program, and the County's Domestic Violence Council.

Facilitator:

Nicolle Perras, Los Angeles County

Panelists:

Ellen Eidem, Los Angeles County
Andrea Welsing, Los Angeles County
Eve Sheedy, Los Angeles County

Informed Data: How to Create a Community-Level Health and Well-Being Data System San Marino

Reporting the rate of various diseases and conditions is not enough to understand the impact of diseases on the community, who is impacted, the social and environmental factors that impact the disease, the economic costs, and how best to prevent the disease. The County of San Diego's Public Health Services' (PHS) Community Health Statistics Unit has created a community-level data system using commonly available, existing resources. This workshop will equip attendees with information on how to utilize similar data sources and resources to comprehensively understand your jurisdiction's health and well-being.

Facilitator:

Elizabeth Hernandez, San Diego County

Panelists:

Leslie Ray, San Diego County
Isabel Corcos, San Diego County
Ryan Smith, San Diego County

Making Sense of the Dollars and Cents: CHEAC Fiscal Forum Meeting San Rafael

The CHEAC Fiscal Forum, consisting of LHD fiscal managers and staff, will convene for its quarterly meeting to discuss fiscal and budgetary matters facing LHDs throughout California.

Thursday, October 10, 1:15 pm - 2:45 pm

CHEAC Small County Committee
Fountain IV

CHEAC Suburban LHD Roundtable
San Marino

CHEAC Urban LHD Roundtable
San Rafael

SPONSORS

LiveHealth[®]
ONLINE

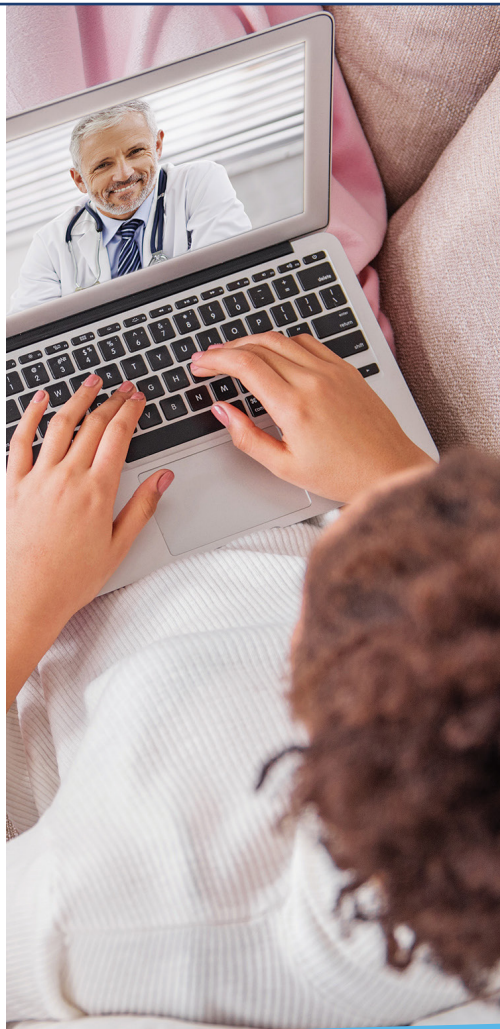
Anthem[®] 
BlueCross

Members can now visit a doctor 24/7 using LiveHealth Online.

Using LiveHealth Online, Anthem Blue Cross Medi-Cal members talk to a board-certified doctor through live video on their smartphone, tablet or computer, for **\$0 per visit**.

Anthem Blue Cross Medi-Cal is dedicated to increasing access to care for our members. Learn how at livehealth.com.

Download the free app:



LiveHealth Online is the trade name of Health Management Corporation, a separate company providing telehealth services on behalf of Anthem.

Anthem Blue Cross is the trade name of Blue Cross of California. Anthem Blue Cross and Blue Cross of California Partnership Plan, Inc. are independent licensees of the Blue Cross Association. Anthem is a registered trademark of Anthem Insurance Companies, Inc. Blue Cross of California is contracted with L.A. Care Health Plan to provide Medi-Cal Managed Care services in Los Angeles County.

SPONSORS



California Health Care Foundation



The California Health Care Foundation is dedicated to advancing meaningful, measurable improvements in the way the health care delivery system provides care to the people of California, particularly those with low incomes and those whose needs are not well served by the status quo. We work to ensure that people have access to the care they need, when they need it, at a price they can afford.

www.chcf.org



LiveStories



SPONSORS



We believe in a healthy future.

At Kaiser Permanente, our commitment to well-being goes beyond health care. We're also committed to improving the communities we serve. That's why we support County Health Executives Association of California.

Together we make a difference.

community.kp.org  KAISER PERMANENTE®



Software Connecting People.
Connected People, Improving Lives.



UNIVERSITY OF
SAN FRANCISCO

School of Nursing and
Health Professions

THANK YOU FOR ATTENDING THE 2019 CHEAC Annual Meeting



Wireless Internet Information

**Select Network: WESTIN-MEETING
Open Internet Browser
Enter Passcode: CHEAC2019**