

# Transforming Data into Action

*Stephanie Caldwell, MPH*  
*Director of Strategic Initiatives*

**2019 Annual CHEAC Convening**

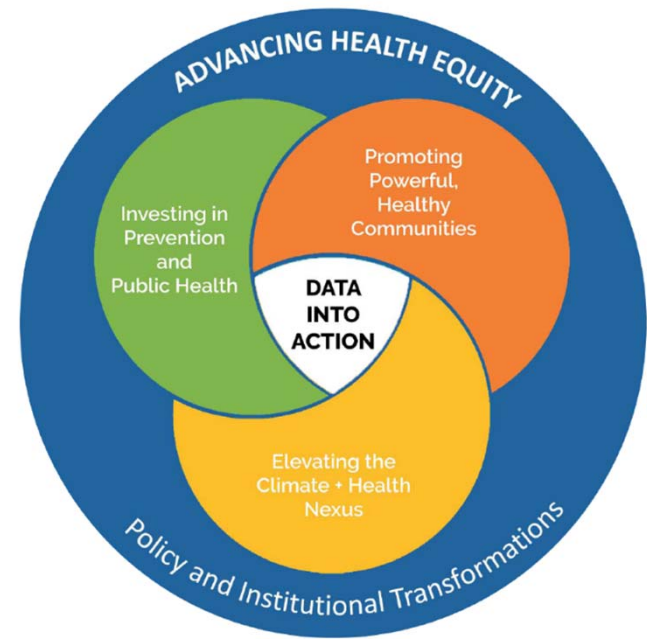
Workshop: Advancing Health Equity within Public Health Practice  
October 9, 2019



# Public Health Alliance of Southern California

Coalition of 8 local health departments

City of Long Beach  
Los Angeles County  
San Bernardino County  
Santa Barbara County  
City of Pasadena  
Riverside County  
San Diego County  
Ventura County



# Priority Strategies



1

## **Advance Health Equity**

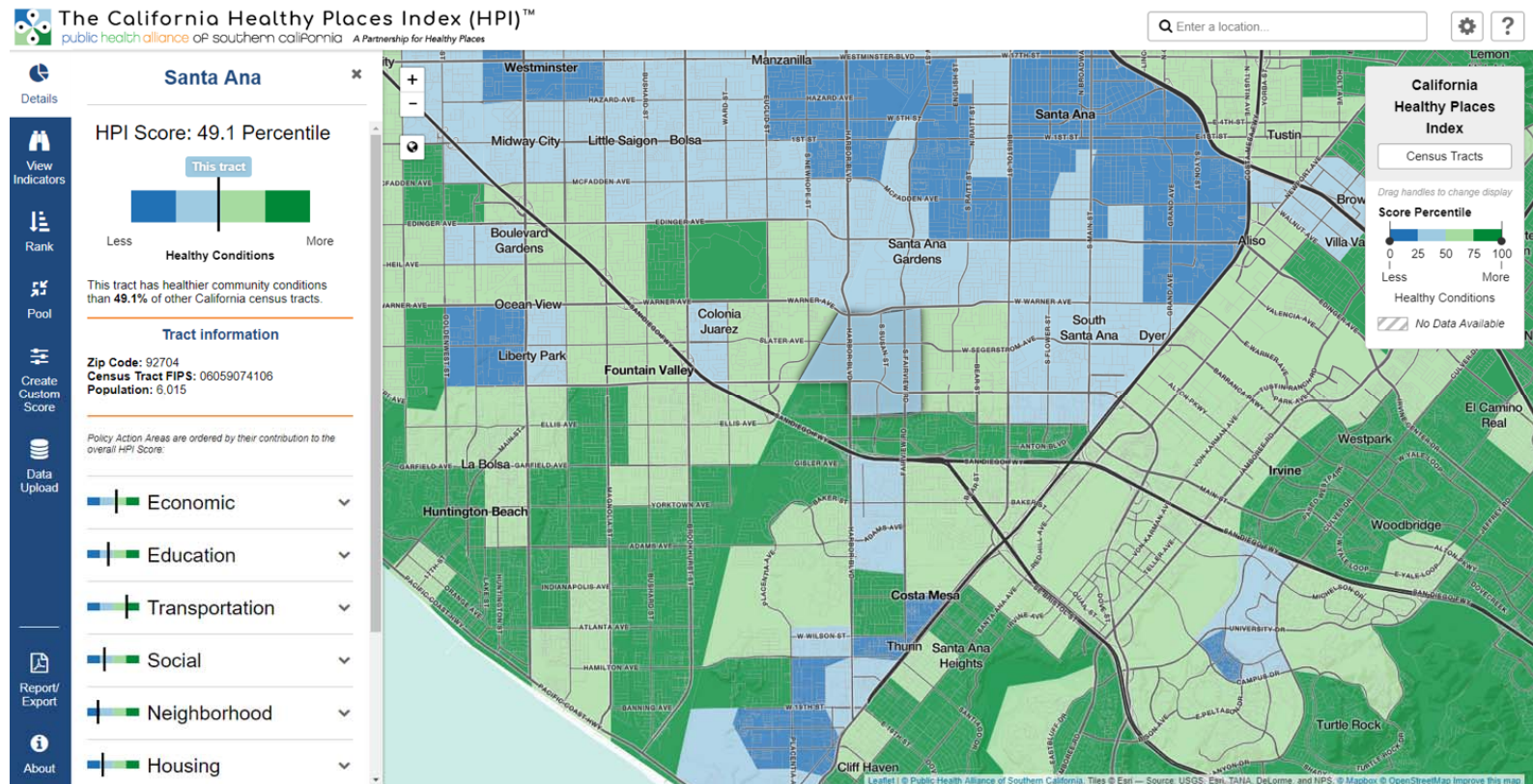
Everyone should have the opportunity and resources to live a healthy life

2

## **Transform Data into Action**

Everyone should have access to timely, accurate, and relevant data for their community

# California Healthy Places Index (HPI)



# HPI's Unique Approach

## Granular

Fine geographic resolution reveals the variation *within* cities, counties, and communities

## Policy Solutions

Each indicator is supported by a wealth of policy solutions detailed in our Policy Guides

## Validated

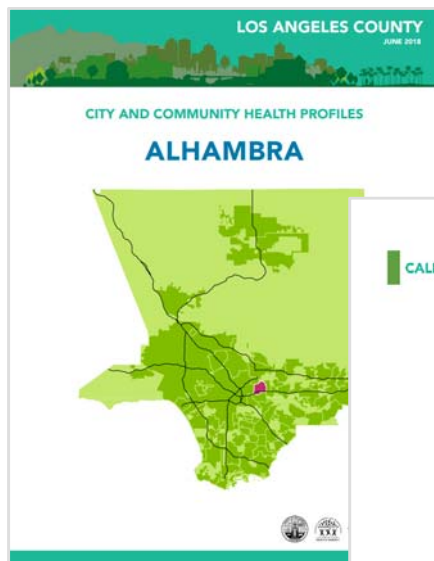
Each indicator – and the overall index – is linked to a summary health outcome: **life expectancy at birth**

# California Healthy Places Index Indicators

**25 indicators** that represent community conditions at the Census tract level, grouped into eight **Policy Action Areas**.

<u><b>Economic</b></u> 32%	<u><b>Education</b></u> 19%	<u><b>Transportation</b></u> 16%	<u><b>Social</b></u> 10%	<u><b>Neighborhood</b></u> 8%	<u><b>Housing</b></u> 5%	<u><b>Clean Environment</b></u> 5%	<u><b>Healthcare Access</b></u> 5%
<ul style="list-style-type: none"><li>• Employed</li><li>• Income</li><li>• Above Poverty</li></ul>	<ul style="list-style-type: none"><li>• In Pre- School</li><li>• In High School</li><li>• Bachelor's Education or Higher</li></ul>	<ul style="list-style-type: none"><li>• Automobile Access</li><li>• Active Commuting</li></ul>	<ul style="list-style-type: none"><li>• Two Parent Household</li><li>• Voting in 2012</li></ul>	<ul style="list-style-type: none"><li>• Retail Density</li><li>• Park Access</li><li>• Tree Canopy</li><li>• Supermarket Access</li><li>• Alcohol Outlets</li></ul>	<ul style="list-style-type: none"><li>• Low-Income Renter Severe Housing Cost Burden</li><li>• Low-Income Homeowner Severe Housing Cost Burden</li><li>• Housing Habitability</li><li>• Uncrowded Housing</li><li>• Homeownership</li></ul>	<ul style="list-style-type: none"><li>• Ozone</li><li>• PM 2.5</li><li>• Diesel PM</li><li>• Water Contaminants</li></ul>	<ul style="list-style-type: none"><li>• Insured Adults</li></ul>

# HPI Into Action: Community Profiles



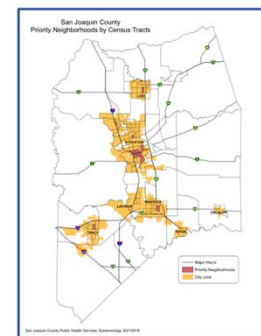
## CALIFORNIA HEALTHY PLACES INDEX

As highlighted in this report, the health of a community is shaped by many factors, the most important of which are the social, economic, and environmental conditions in the community and the policies that impact these conditions. Given the complexity of factors that influence health and the many ways in which health is measured, it is often difficult to compare overall health across different communities. To address this challenge and to identify opportunities for improving health and reducing health inequities, the Public Health Alliance of Southern California collaborated with national, state, and local public health experts to develop a single composite measure that summarizes the health of a community, referred to as the California Healthy Places Index (CHPI). The index is calibrated to correlate with life expectancy. In addition to environmental factors, it takes into account the diverse non-medical economic, social, and political factors that influence physical and mental function, behavior and disease. In total, the index combines 23 community characteristics into a single composite score. HPI scores have been calculated for almost all census tracts in California. In addition, the Public Health Alliance of Southern California has made data available for numerous indicators that are not part of the HPI but can still be used as decision support tools to inform public health and policy efforts. The HPI website also features an interactive mapping tool that allows users to visualize the HPI data at different levels and various geographical units. For more information, please visit <http://healthyplacesindex.org/>.

For the City and Community Health Profiles series, the HPI score was recalculated for incorporated cities, the 15 Los Angeles City Council Districts, and unincorporated communities by aggregating census tracts to these geographical locations. The recalculated HPI scores were assigned a percentile rank to facilitate comparison among cities and communities within Los Angeles County.



Public Health Alliance of Southern California, California Healthy Places Index, 2018



## San Joaquin County 2019 Priority Neighborhood Profiles March 2019

Prepared by: **ad lucem** consulting

**Root Causes of Health**  
at 1 times worse than all other California census tracts, scoring extremely low on economic, education, transportation, healthcare, and housing conditions. Disparities are striking when it comes to high school enrollment, college degrees, car access, two parent households, voting, income, and housing quality. This neighborhood performs relatively better on active commuting, crime among lower income residents, water contamination, air quality, and retail density.

**Rankings of Root Causes of Health Compared to Healthiest SIC**

Indicator	Census Tract 1	Healthiest SIC Communities
<b>Left Total Score</b>	0	75
Total Score	0	75
Employment	0	62
Income	0	70
Total Score	0	83
Two Parent Households	2	74
Voting in 2012	2	82
Total Score	5	83
Preschool Enrollment	24	57
High School Enrollment	1	92
Resident's Education is Higher	7	58
<b>San</b>		
Total Score	0	42
Administrative Access	0	42
Active Commuting	22	30
<b>and</b>		
Total Score	85	72
Retail Density	91	38
Park Access	88	44
Tree Canopy	40	75
Supermarket Access	34	36
Alcohol Outlets	22	26
Total Score	9	82
Low Income Homeowner	27	73
Housing Instability	39	23
Unaffordable Housing	2	52
Homelessness	24	73
Homeownership	1	77
<b>Pollution</b>		
Total Score	41	45
Climate	13	43
Particulate Matter 2.5	6	41
Ozone PM	19	74
Water Contaminants	25	40
<b>Healthcare Access</b>		
Total Score/Health	13	84

**When it comes to root causes of health, Census Tract 1 performs worse than all other census tracts across CA. In contrast, SIC's healthier communities do better than 75%.**

**High school enrollment in Census Tract 1 is lower than 95% of CA.**

**Census Tract 1 has higher rates of homeownership among low-income residents than almost all CA.**

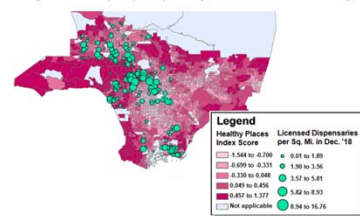


# HPI Into Action: Going Further



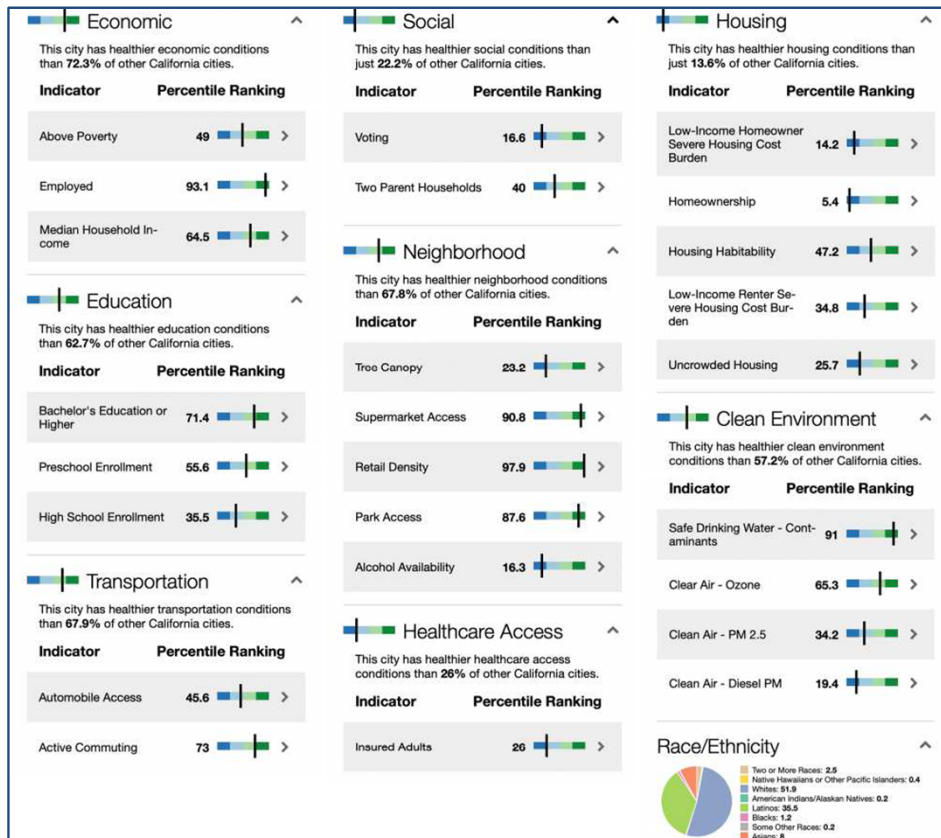
Health Equity Implications of Retail Cannabis Regulation in LA County—Health Impact Assessment

Figure 2: Licensed Dispensary Density & Healthy Places Index Score, Southern LA County, 2018





# Ground-Truthing Assets & Opportunities



# Links and Resources



**The California Healthy Places Index (HPI)<sup>TM</sup>**  
public health alliance of southern california *A Partnership for Healthy Places*

## CONNECT WITH THE ALLIANCE

[SCaldwell@PHI.org](mailto:SCaldwell@PHI.org)

## HPI ON THE WEB

[HealthyPlacesIndex.org](http://HealthyPlacesIndex.org) | [Map.HealthyPlacesIndex.org](http://Map.HealthyPlacesIndex.org)

## HOW-TO GUIDES

[HealthyPlacesIndex.org/How-To](http://HealthyPlacesIndex.org/How-To)

## **BIG THANKS TO OUR FUNDERS**

The California Endowment | Kaiser Permanente of Southern California