

# ALL CHILDREN THRIVE-CALIFORNIA

Building networks of people and places that are working together to identify innovative strategies and policies that will help ***ALL CHILDREN THRIVE***

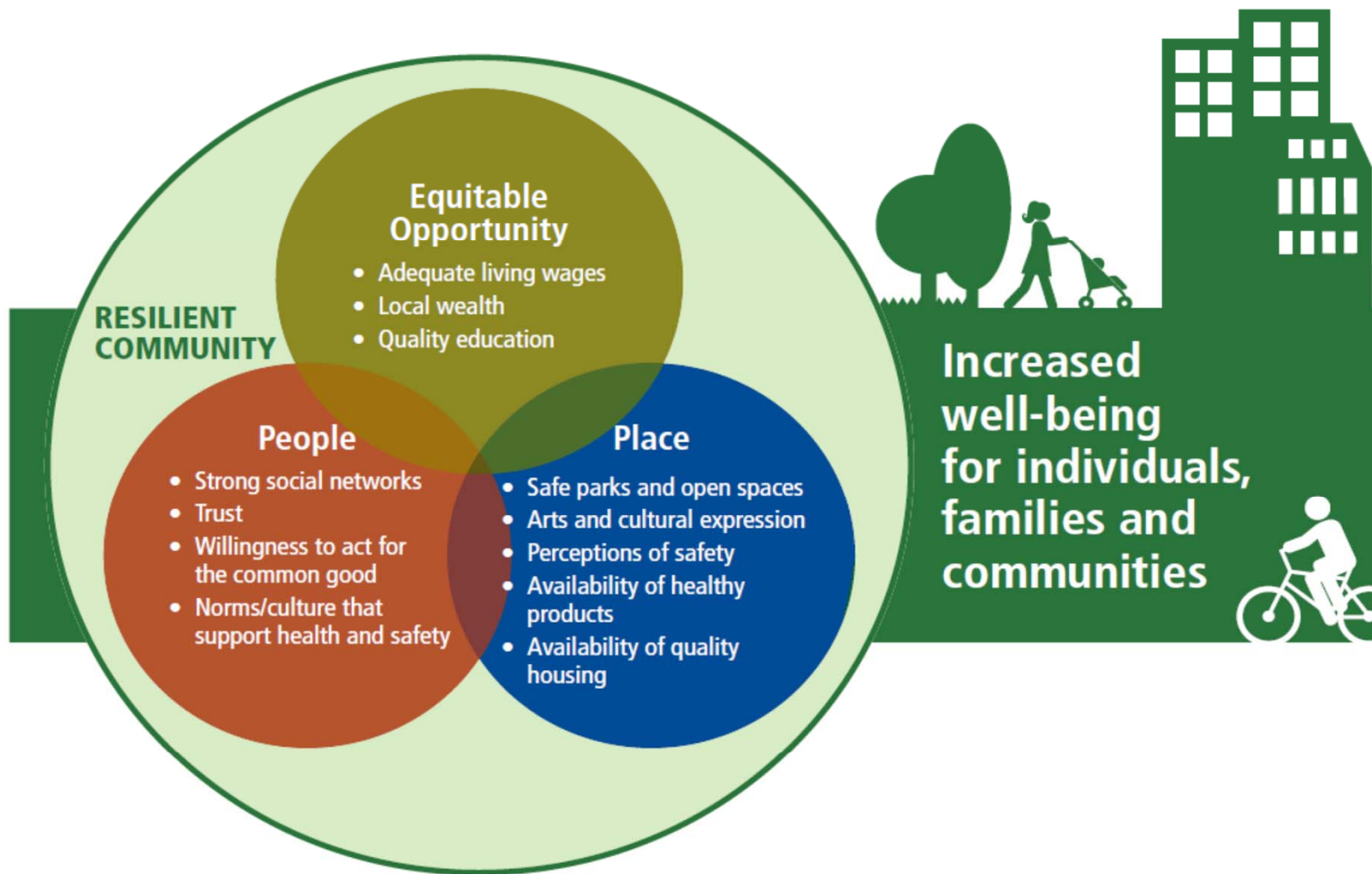
**Reggie Caldwell, LCSW**

[RC@phadvocates.org](mailto:RC@phadvocates.org)

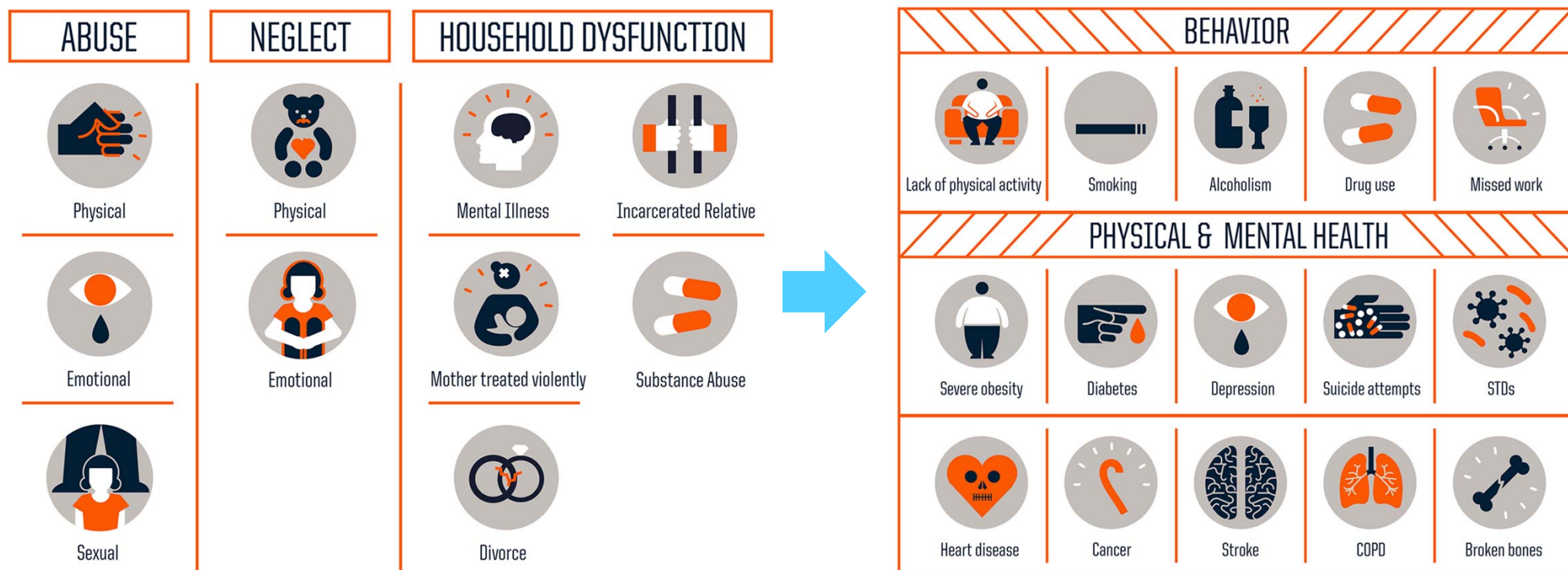
**Kaytie Speziale, MA**

[KSpeziale@phadvocates.org](mailto:KSpeziale@phadvocates.org)





# Adverse Childhood Experiences (ACEs)



# Finding Your ACE Score

**While you were growing up, during your first 18 years of life:**

1. Did a parent or other adult in the household **often** ...  
Swear at you, insult you, put you down, or humiliate you?  
**or**  
Act in a way that made you afraid that you might be physically hurt?  
Yes No If yes enter 1 \_\_\_\_\_
2. Did a parent or other adult in the household **often** ...  
Push, grab, slap, or throw something at you?  
**or**  
**Ever** hit you so hard that you had marks or were injured?  
Yes No If yes enter 1 \_\_\_\_\_
3. Did an adult or person at least 5 years older than you **ever**...  
Touch or fondle you or have you touch their body in a sexual way?  
**or**  
Try to or actually have oral, anal, or vaginal sex with you?  
Yes No If yes enter 1 \_\_\_\_\_
4. Did you **often** feel that ...  
No one in your family loved you or thought you were important or special?  
**or**  
Your family didn't look out for each other, feel close to each other, or support each other?  
Yes No If yes enter 1 \_\_\_\_\_
5. Did you **often** feel that ...  
You didn't have enough to eat, had to wear dirty clothes, and had no one to protect you?  
**or**  
Your parents were too drunk or high to take care of you or take you to the doctor if you needed it?  
Yes No If yes enter 1 \_\_\_\_\_

# Finding Your ACE Score

6. Were your parents **ever** separated or divorced?  
Yes No If yes enter 1 \_\_\_\_\_
7. Was your mother or stepmother:  
**Often** pushed, grabbed, slapped, or had something thrown at her?  
or  
**Sometimes or often** kicked, bitten, hit with a fist, or hit with something hard?  
or  
**Ever** repeatedly hit over at least a few minutes or threatened with a gun or knife?  
Yes No If yes enter 1 \_\_\_\_\_
8. Did you live with anyone who was a problem drinker or alcoholic or who used street drugs?  
Yes No If yes enter 1 \_\_\_\_\_
9. Was a household member depressed or mentally ill or did a household member attempt suicide?  
Yes No If yes enter 1 \_\_\_\_\_
10. Did a household member go to prison?  
Yes No If yes enter 1 \_\_\_\_\_

Now add up your “Yes” answers: \_\_\_\_\_ This is your ACE Score



**PUBLIC HEALTH  
ADVOCATES**  
EVERYONE HAS THE RIGHT TO BE HEALTHY



# As the number of ACEs increase, so does the risk of negative health outcomes



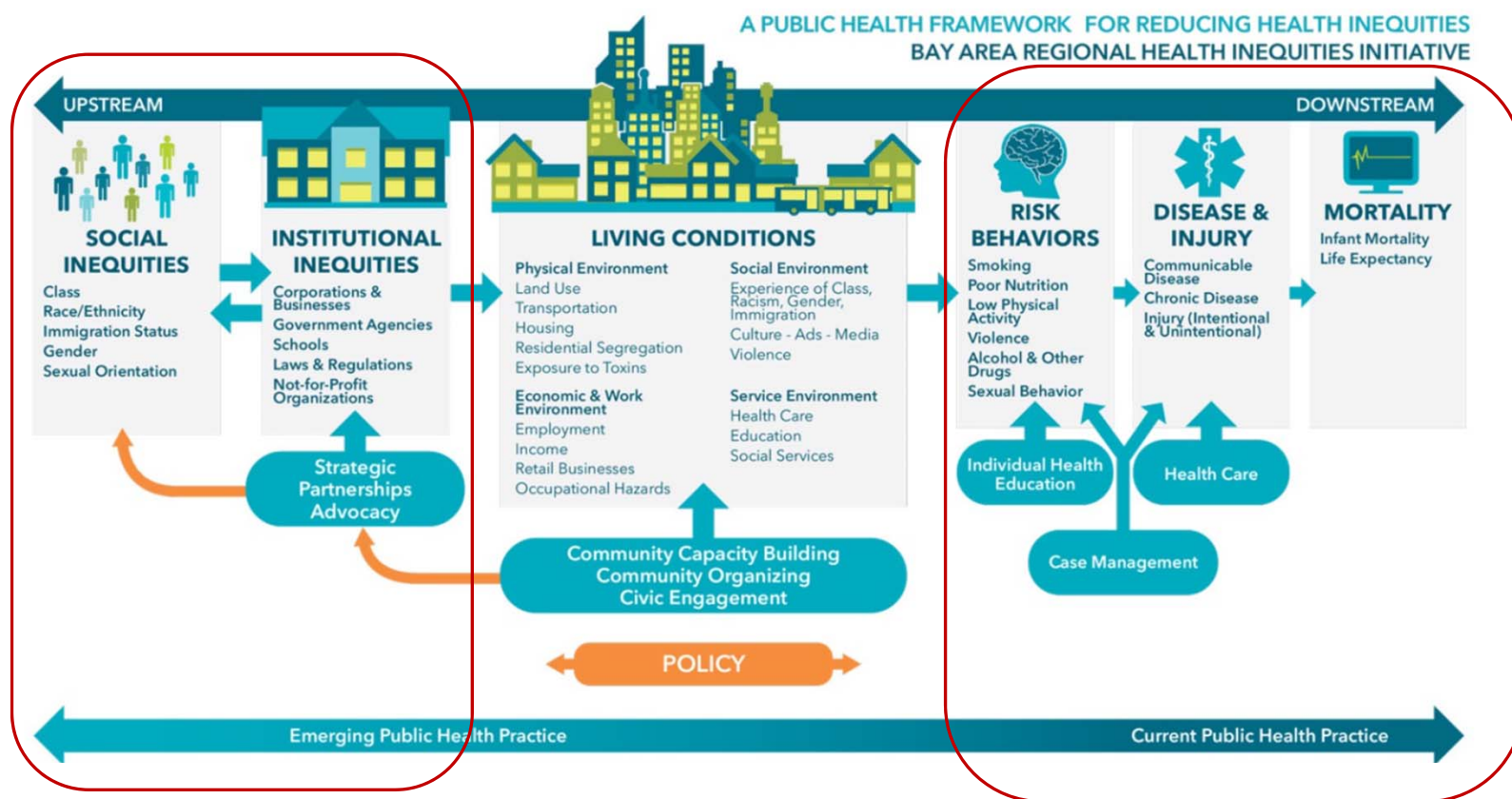
Condition	Increased Rate
Heart Attack	2.3x
Asthma	2.3x
Depression	4.6x
Alcoholism	7.4x
Injection Drug Use	10.3x
Suicide Attempts	12.2x

*A person with 4+ ACEs is 12.2x as likely to attempt suicide*

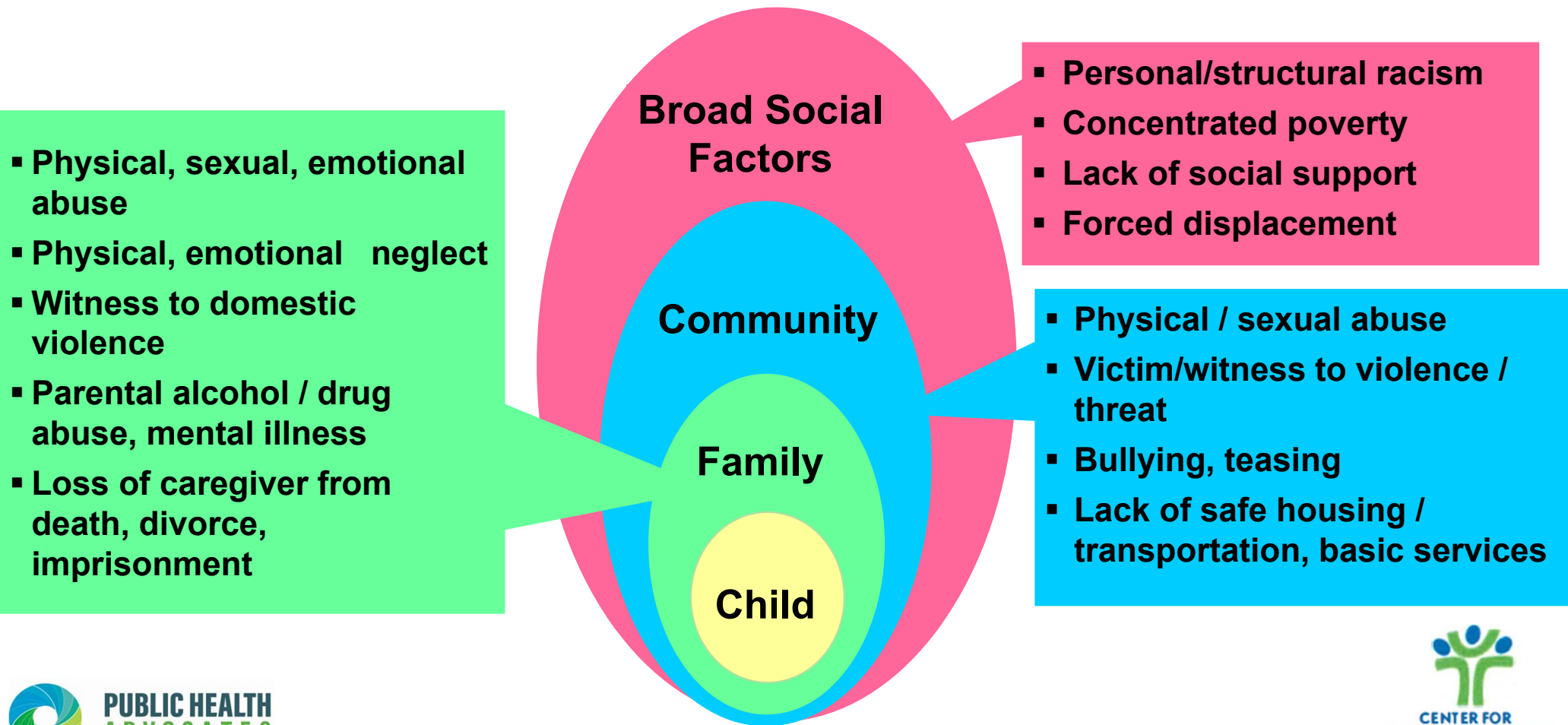




# Social Determinants Framework

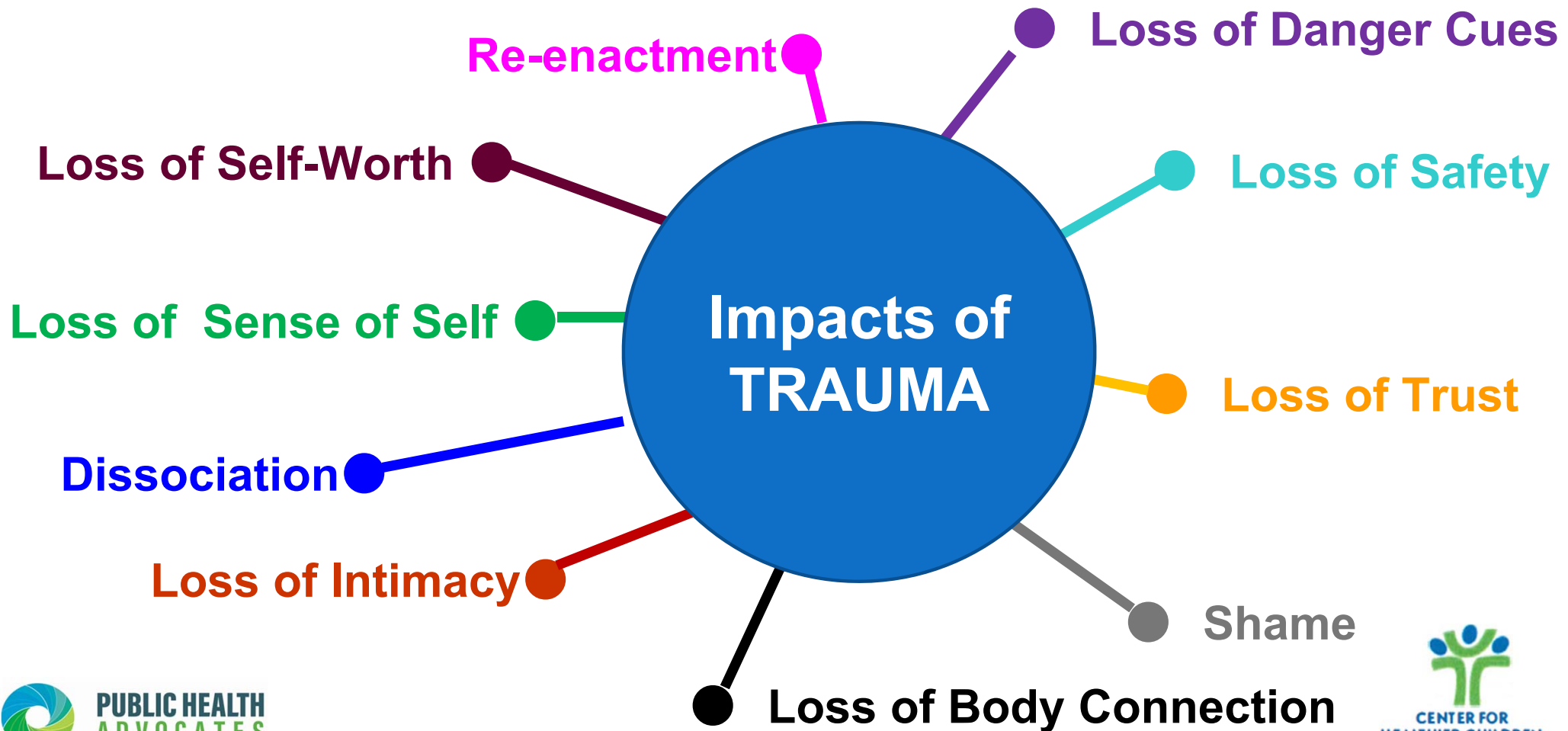


# Sources of Childhood Trauma





# Impacts of Trauma on the Individual

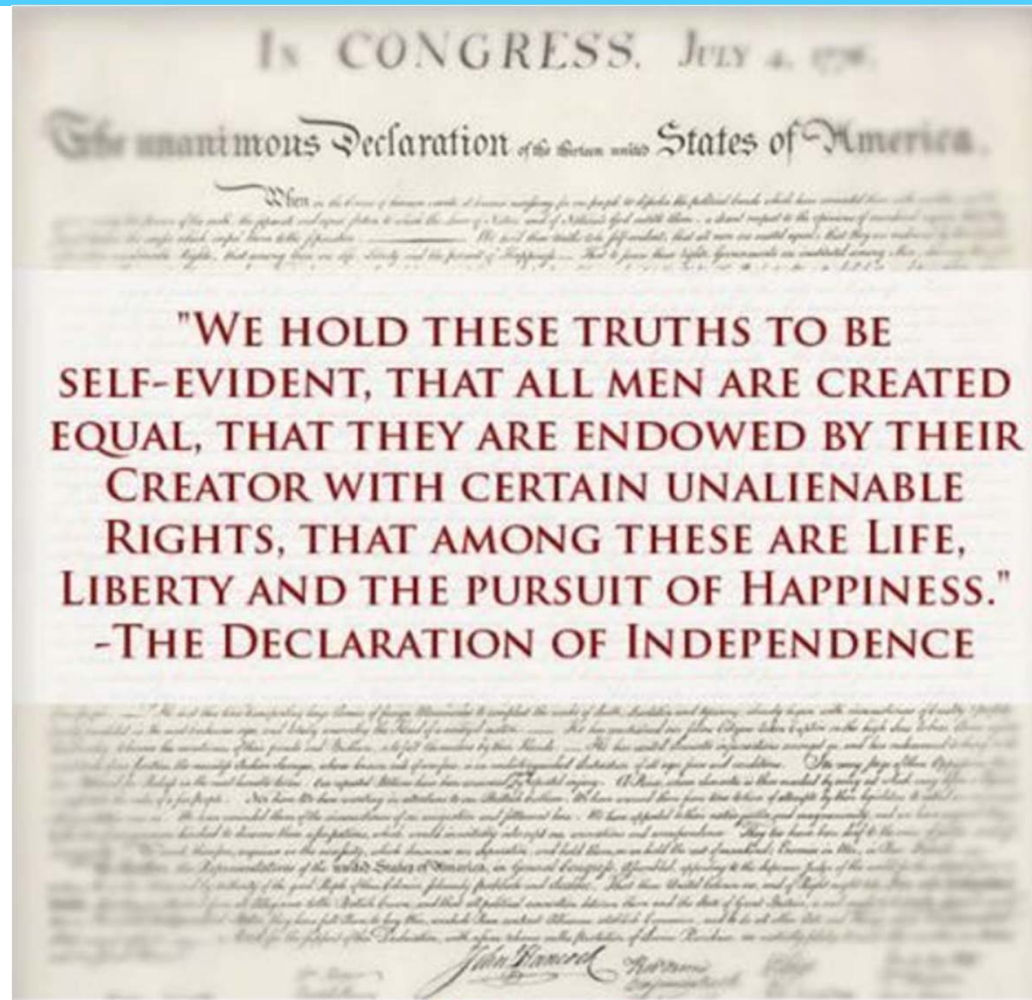




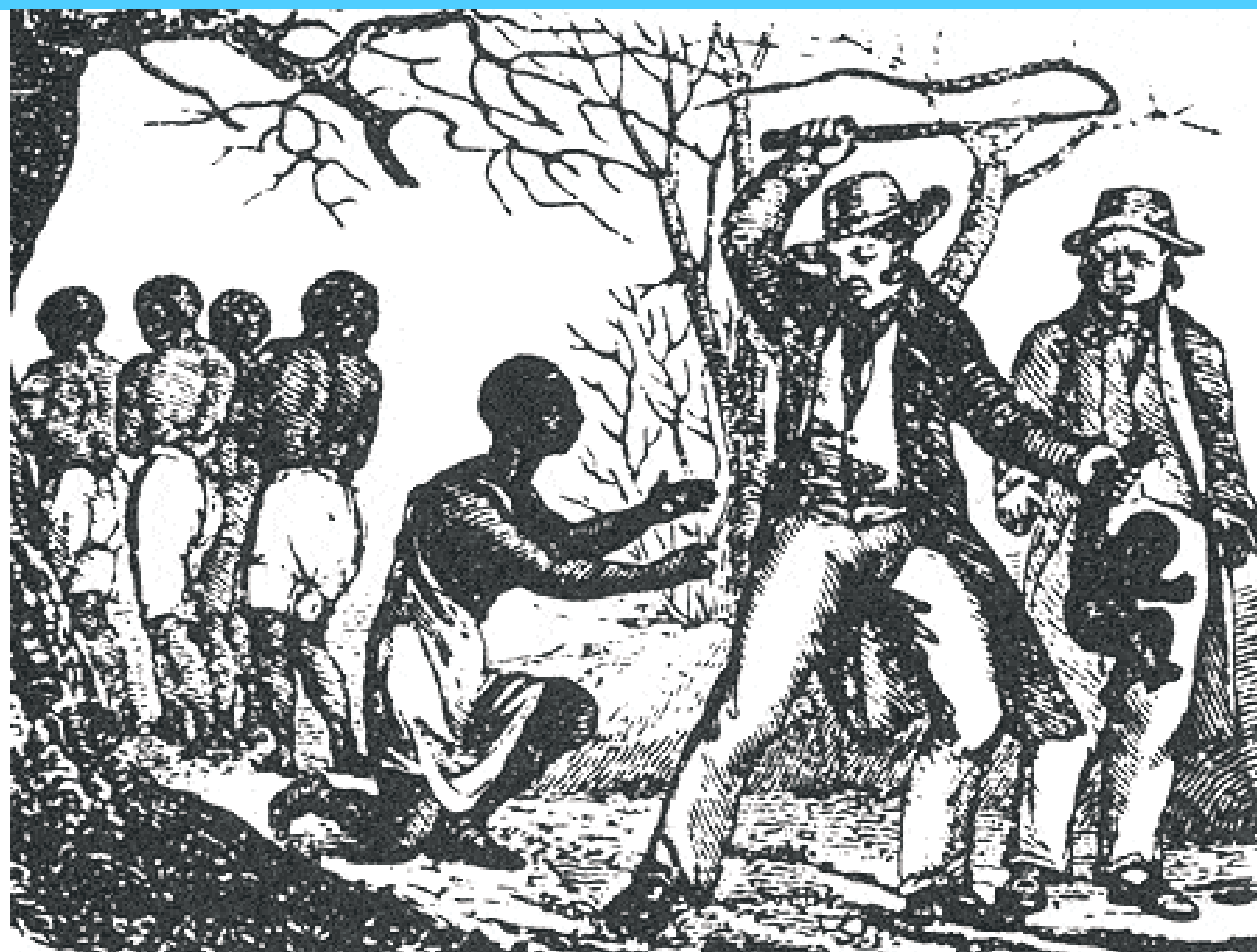
## Sources of Adverse Community Experiences

- **DIRECT:** Witness or experience racism and violence
- **COMMUNITY:** Feel and experience racism and violence everywhere
- **SAFETY:** High levels of trauma across the population: Prevents us from meeting our basic need

# Is This Really True?



# Legacy of Multigenerational Trauma





# Legacy of Multigenerational Trauma

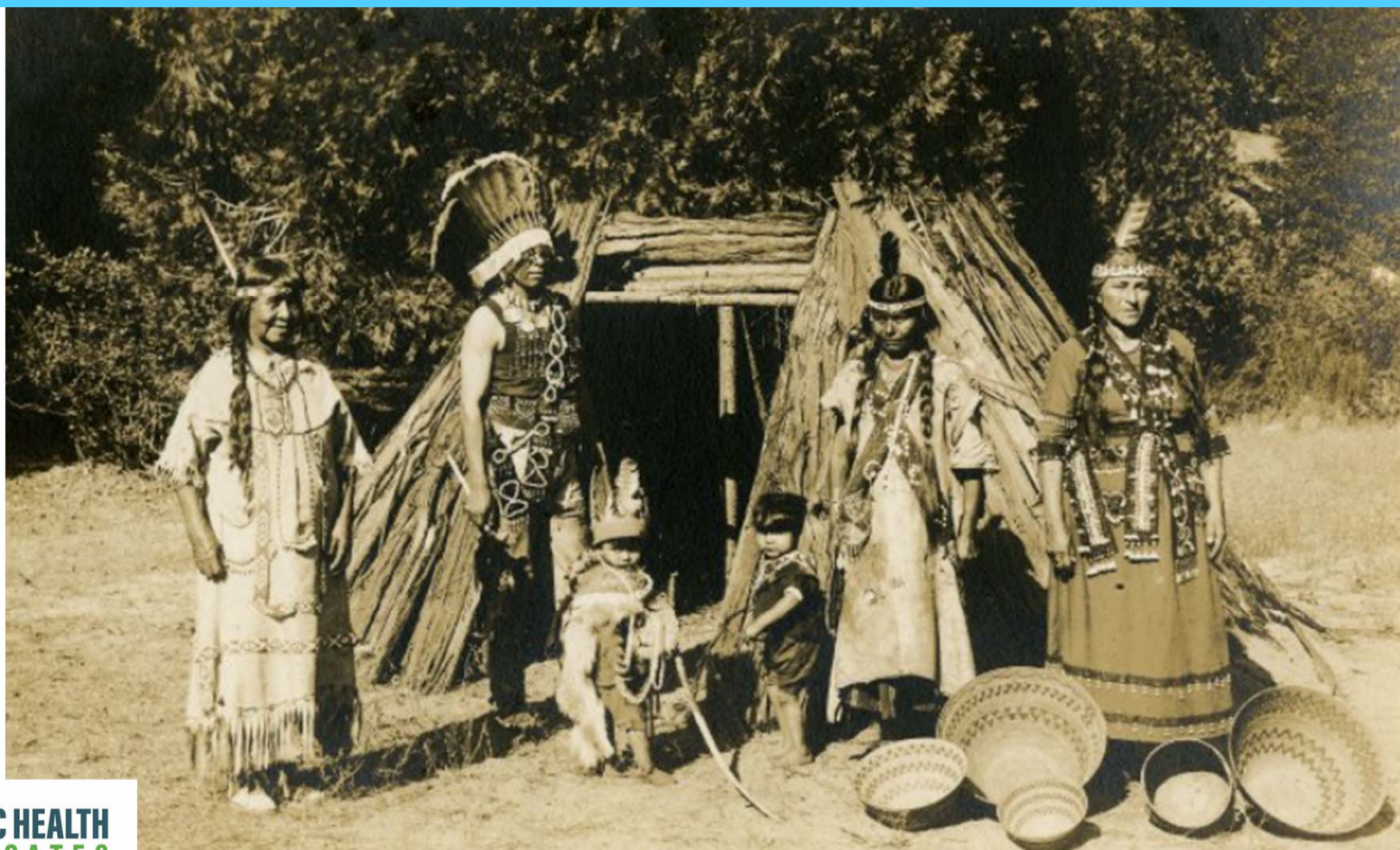


# Legacy of Multigenerational Trauma





# Legacy of Multigenerational Trauma



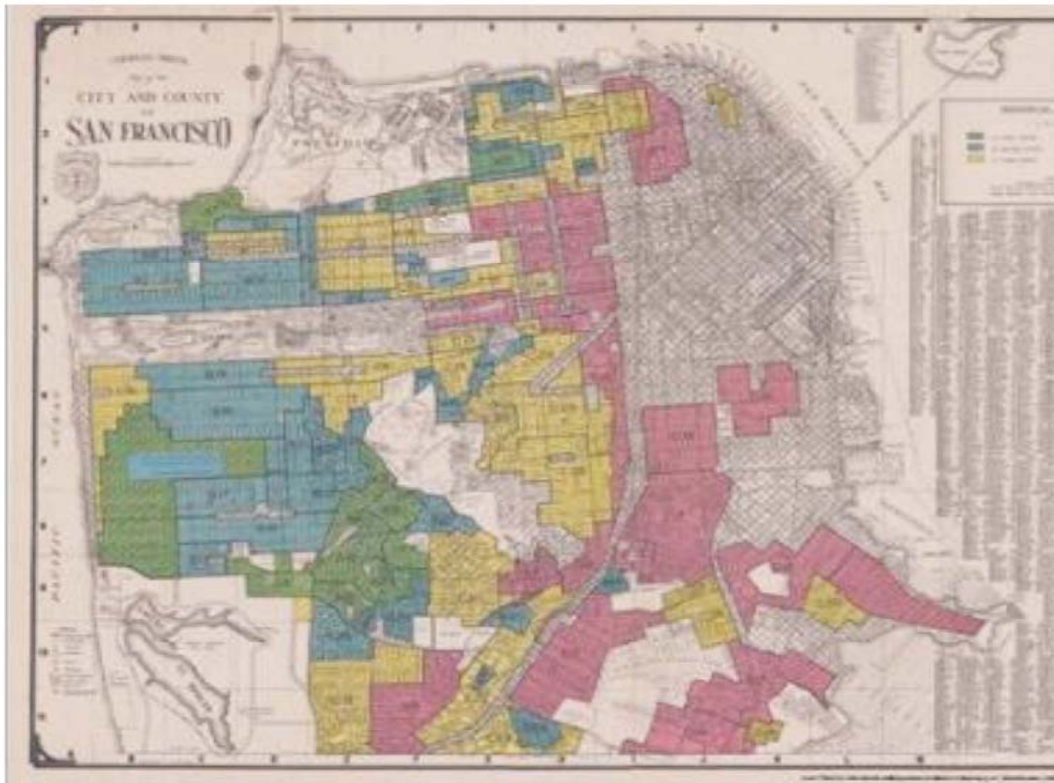
**PUBLIC HEALTH  
ADVOCATES**  
EVERYONE HAS THE RIGHT TO BE HEALTHY

  
**CENTER FOR  
HEALTHIER CHILDREN,  
FAMILIES & COMMUNITIES**

# Legalized Wealth Extraction

## Redlining in San Francisco

Source: FHA <http://salt.unc.edu/T-Races/mosaic.html>



Federal Housing  
Authority Underwriting  
Manual:

"Red areas ... are characterized by detrimental influences in a pronounced degree, undesirable population or infiltration of it. . . Some mortgage lenders may refuse to make loans in these neighborhoods and other will lend only on a conservative basis."

# Legacy of Redlining

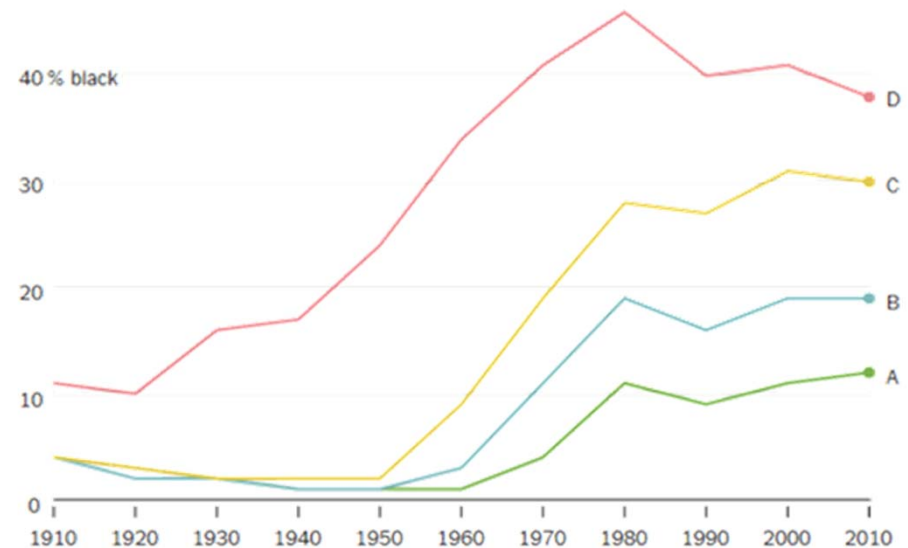
## Official Practice 1934-1968

Fifty Years Later in 2018...

- **2/3** of **D areas** are inhabited by mostly Black and Latinos
- **91%** of **A areas** remain middle-to-upper-income today
- **85%** of **A areas** still predominantly white

### Redlined Neighborhoods Have the Highest Share of Black Residents

D-rated neighborhoods were considered 'hazardous,' A-rated neighborhoods the 'best.'



Data from 149 cities mapped by the Home Owners' Loan Corporation in the 1930s.

Source: 'The Effects of the 1930s HOLC "Redlining" Maps' by D. Aaronson, D. Hartley, B. Mazumder.



# Legalized Wealth Extraction

**White families had a 30 year head start in building wealth through homeownership**

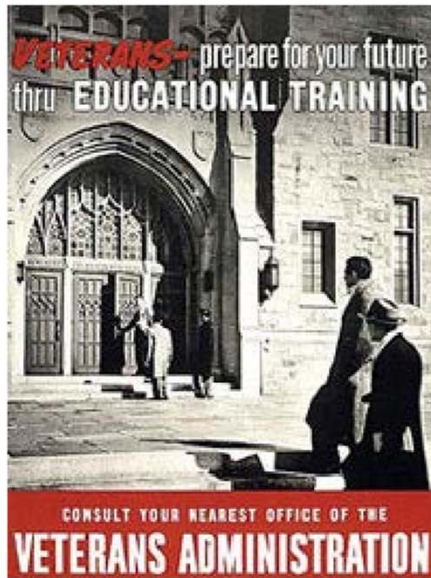


❖ **1935 Social Security:** Blacks and Latino farm and domestic workers paid in, but were excluded from benefits

❖ **1937 FHA:** First federal agency to openly counsel and support segregation-Between 1930 and 1950, 3 in 5 homes purchased in U.S. were financed by FHA, yet less than 2% were made to non-white home buyers

# Legalized Wealth Extraction

The GI Bill was the single greatest instrument for widening racial inequities in postwar America



The largest federal public benefits program in history, and a low-cost route to wealth creation

- Paid college tuition
- Low interest home mortgages
- For every dollar invested, the GI Bill returned \$7 dollars to the nation

but...

Discrimination in college admission and housing markets prevented most soldiers of color from using the benefits, and thus prevented an accumulation and transfer of wealth to future generations.

# Legalized Wealth Extraction

## Present Day State Sponsored Wealth Extraction

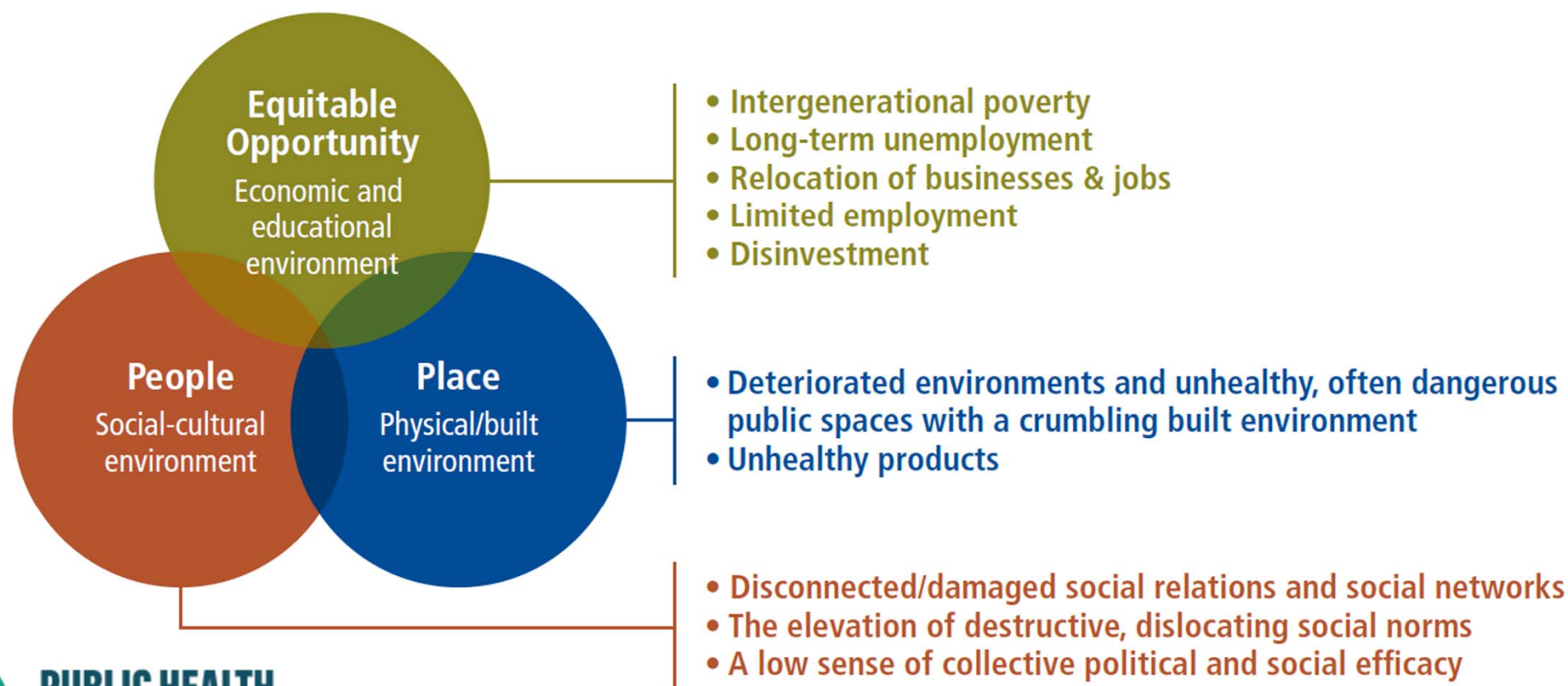
“Officers appear to see some residents, especially those who live in Ferguson’s predominantly African-American neighborhoods, less as constituents to be protected than as potential offenders and sources of revenue.”

**FERGUSON POLICE DEPARTMENT REPORT**

Department of Justice



# Symptoms of **Community** Trauma





# ALL CHILDREN THRIVE CALIFORNIA (ACT/CA)

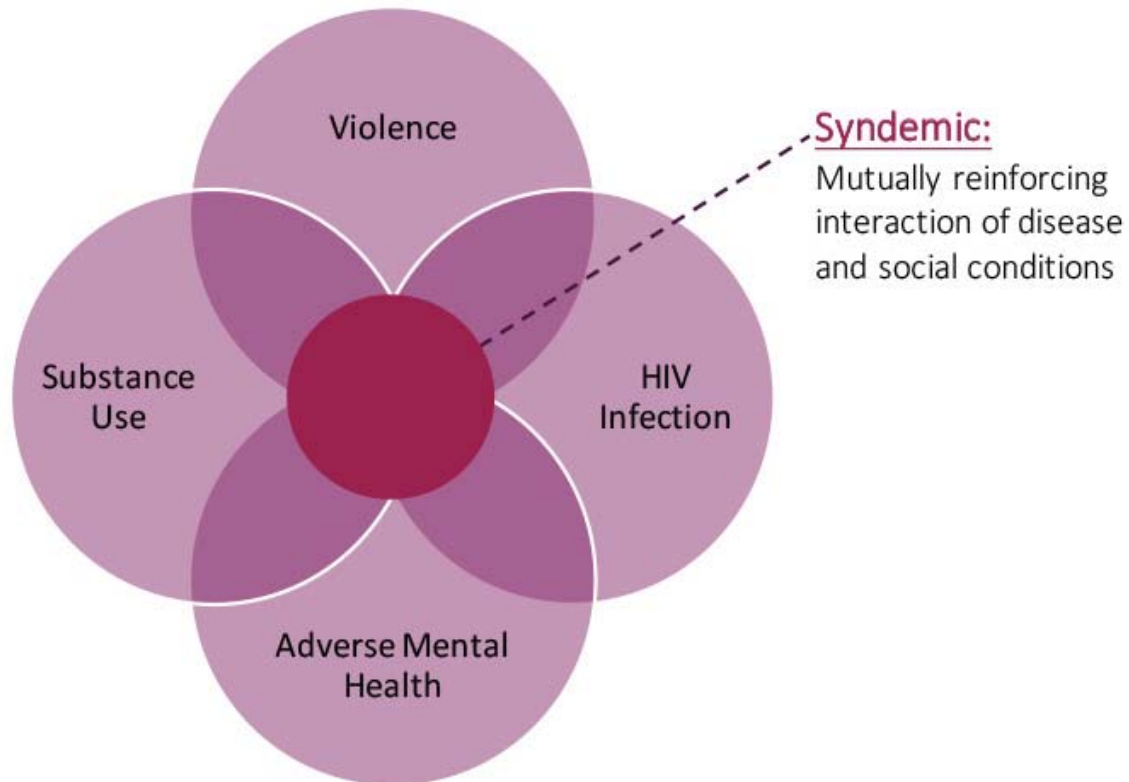
*A one-time allocation of \$10 million in Proposition 63 administrative funds to prevent adverse childhood experiences, counter their effects, promote healing, and foster individual and community resilience to give all California children the opportunity to thrive.*



## Recognize the Challenge

- Intense challenges facing children
- Problems are not being fully addressed
- No single intervention will work everywhere
- Therefore build on success, embrace uncertainty, and learn together

# Syndemics Defined



Population-level clustering of social and health problems

*Criteria:*

1. two (or more) **diseases or health conditions** cluster within a specific population
2. **contextual and social factors create the conditions** in which two (or more) diseases or health conditions cluster
3. the clustering of diseases results in adverse disease interaction, either biological or social or behavioral, **increasing the health burden of affected populations.**

# Interacting Layers of Trauma and Healing



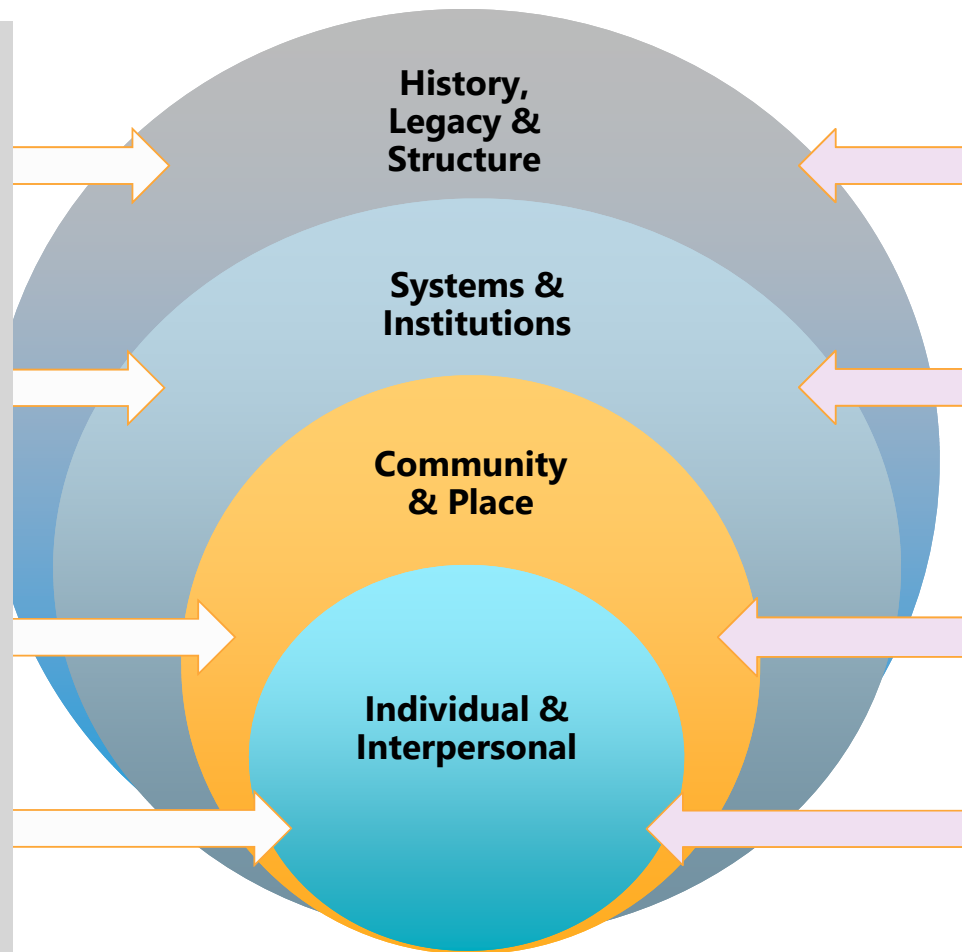
RYSE, 2019

**Nation Building** by Enslavement, Genocide, Colonization, Economic Exploitation, Resource Extraction, White Supremacy, Patriarchy

**Systemic Subjugation of BIPOC** by Interacting Policies & Systems: (Capitalism): War on Drugs, Mass Incarceration, Segregation (de jure and de facto), Anti-Immigrant Policies, Climate Violence, Media Assaults, Broken Treaties, Displacement & Redlining

**Atmospheric Distress** that includes Interpersonal, Family, Community Violence & Exposure; Sexual Exploitation, Lack of Safe Passage and Spaces; Lack of Green Spaces, Underinvestment, Oversurveillance

**Embodiment and Expression of Distress** through Personal Traumatic Experiences; Bullying, Family Systems Stressors, ACEs, Shame and Blame, Generational Transmission



**Collective Liberation** by Truth & Reconciliation, Reparations, Redistribution, Open Borders/No Borders, Multi-racial Solidarity, (Re)imagined Social Compact, Just Transitions

**Lead with Love and Justice** by Healing-Centered & Restorative Practices, Listening Campaigns, Collective Care, Adaptive, Responsive, and Proximate, Land and Power-sharing (Nothing about us without us)

**Build Beloved Community** by Radical Inquiry, Popular Education and Culture Building, Celebration and Affirmation; Healing Spaces, Land Acknowledgement, Arts & Expression, Base & Power-Building

**Honor Resilience and Fortitude** by Listening & Validating, Processing/Integrating Personal Traumatic Experiences, Family Healing, Tailored Supports & Opportunities, Loving Connections To Each Other and The Land; Loving, Predictable Structure

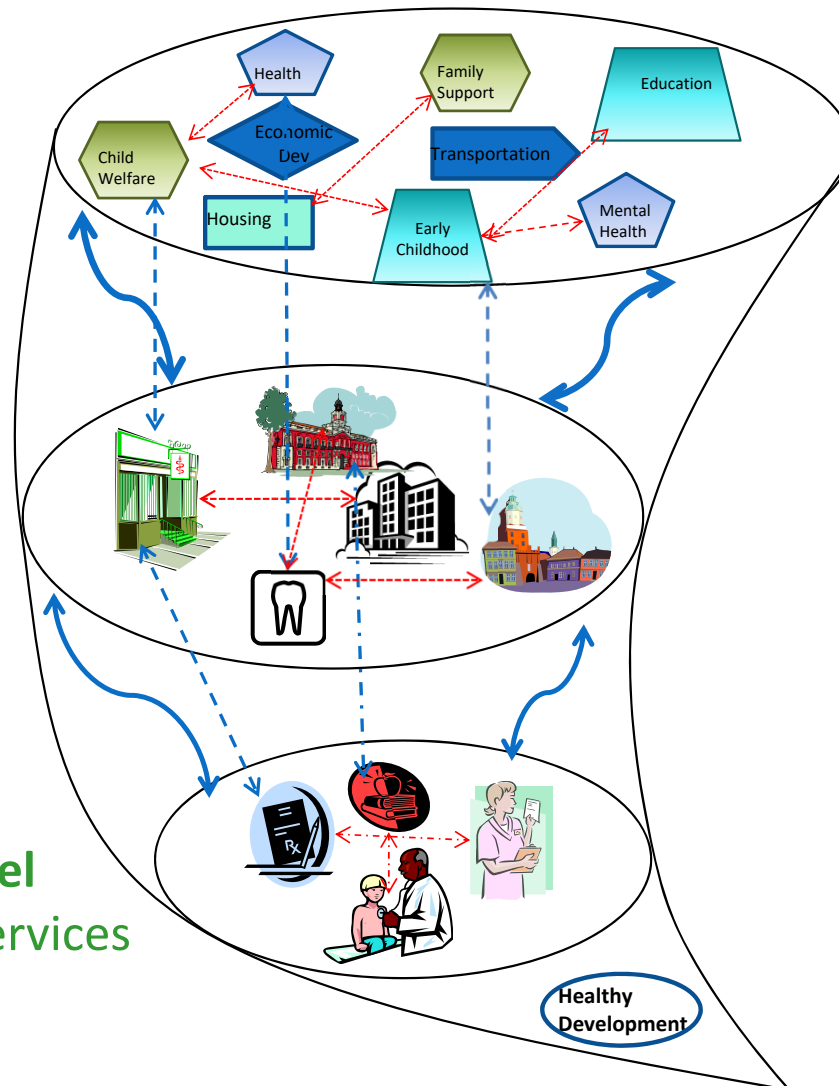


# Optimizing Human Development: 3 Levels of Complexity

**City/County Level**  
Policies & Procedures

**Community Level**  
Organizations & Agencies

**Individual Level**  
Programs & Services

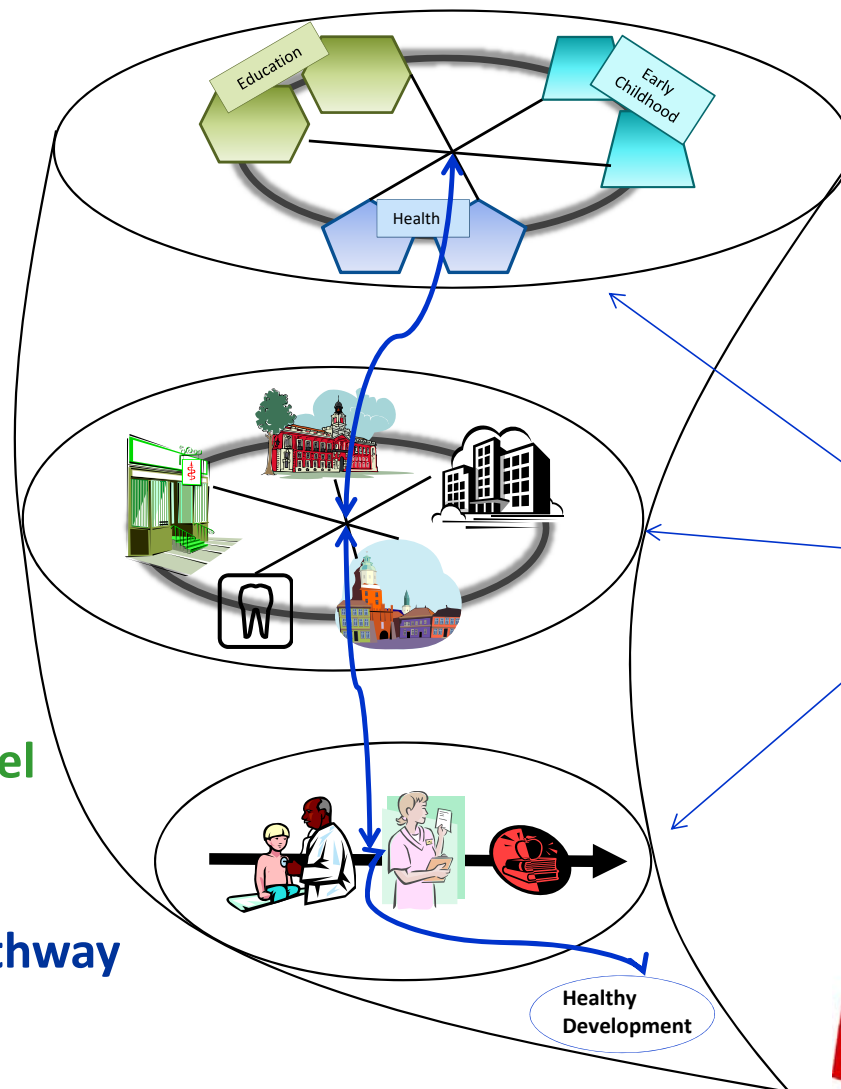




**City/County Level**  
Policies &  
Procedures:  
**Aligned**

**Community Level**  
Organizations &  
Agencies:  
**Networked**

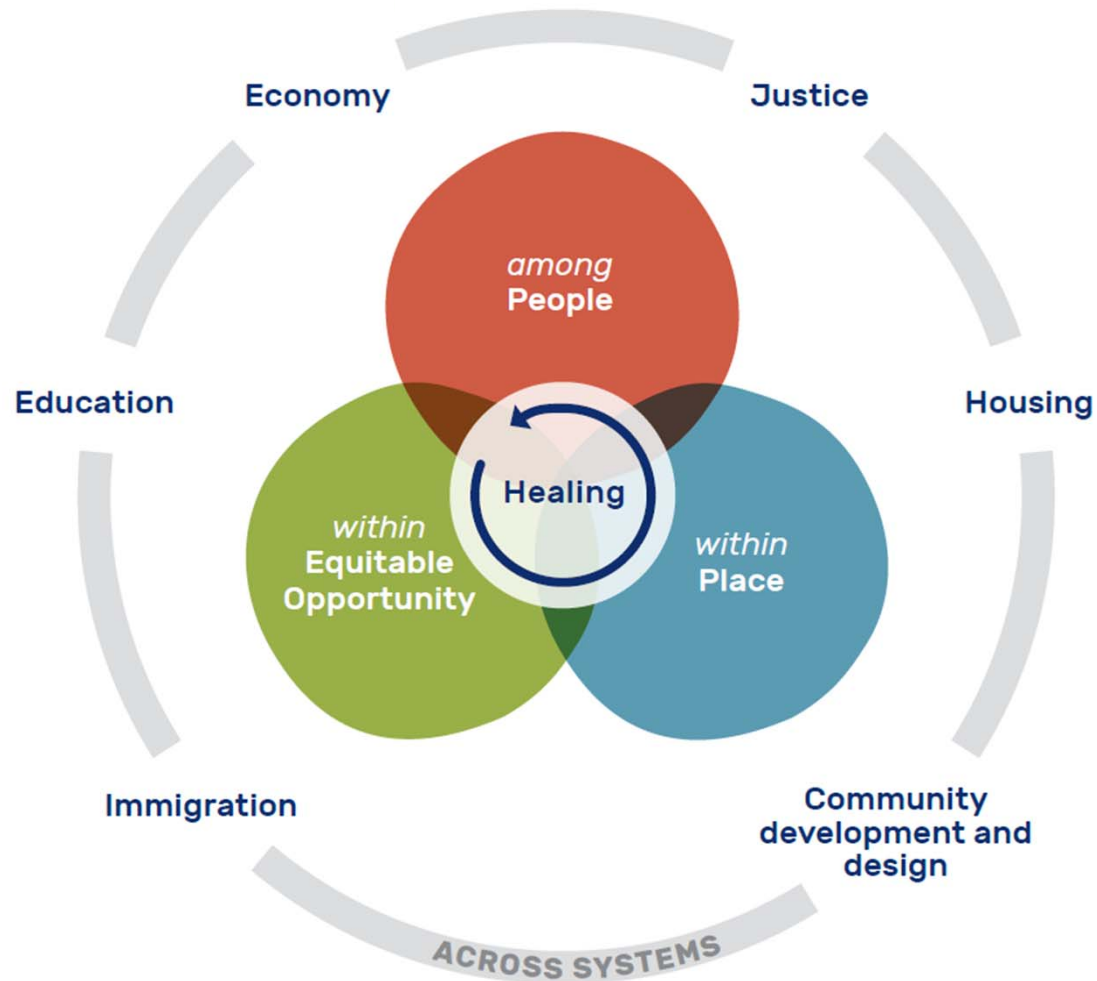
**Individual Level**  
Programs &  
Services:  
**Integrated Pathway**



# Optimizing Human Development: 3 Levels of Complexity

- Collaborative
- Inclusive
- Motivational
- Transformative

# Strategies to Address Community Trauma

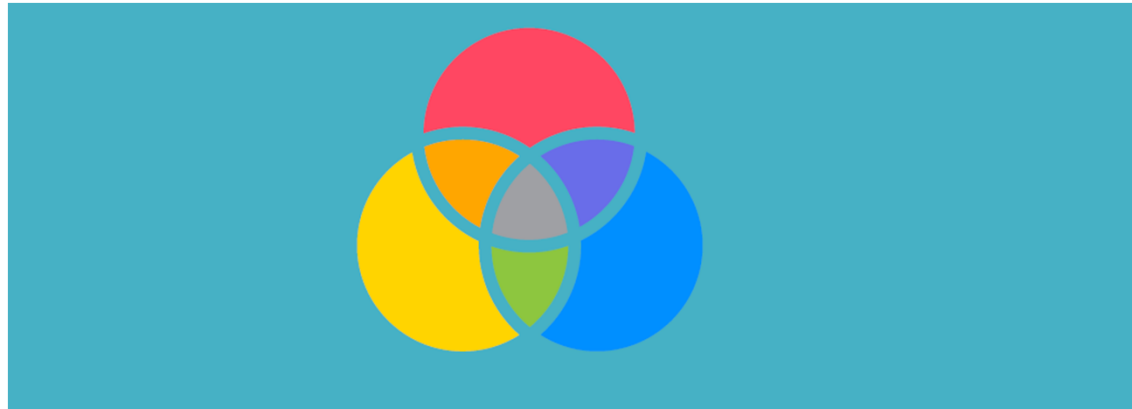


# ACT-CA Components



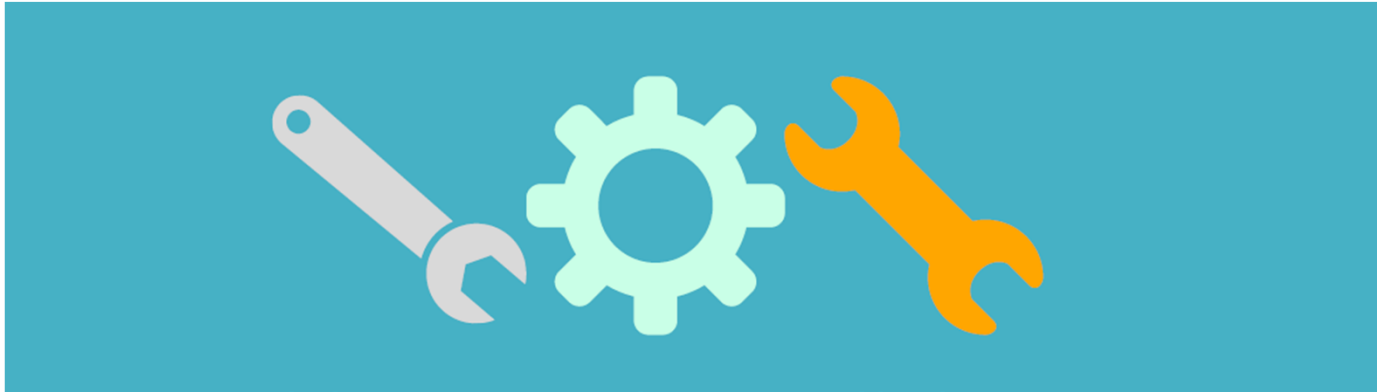
Identify approaches to preventing childhood trauma, diminishing risks, and improving child, family, and community well-being

# ACT-CA Components



Review and analyze data infrastructure systems to monitor and improve efforts to ensure child health, development, and well-being

# ACT-CA Components



Build a collaborative platform and learning system that include tools and strategies to support social innovation and systems level changes

# ACT-CA Components



Provide coaching and technical assistance to cities to prevent trauma and promote resiliency

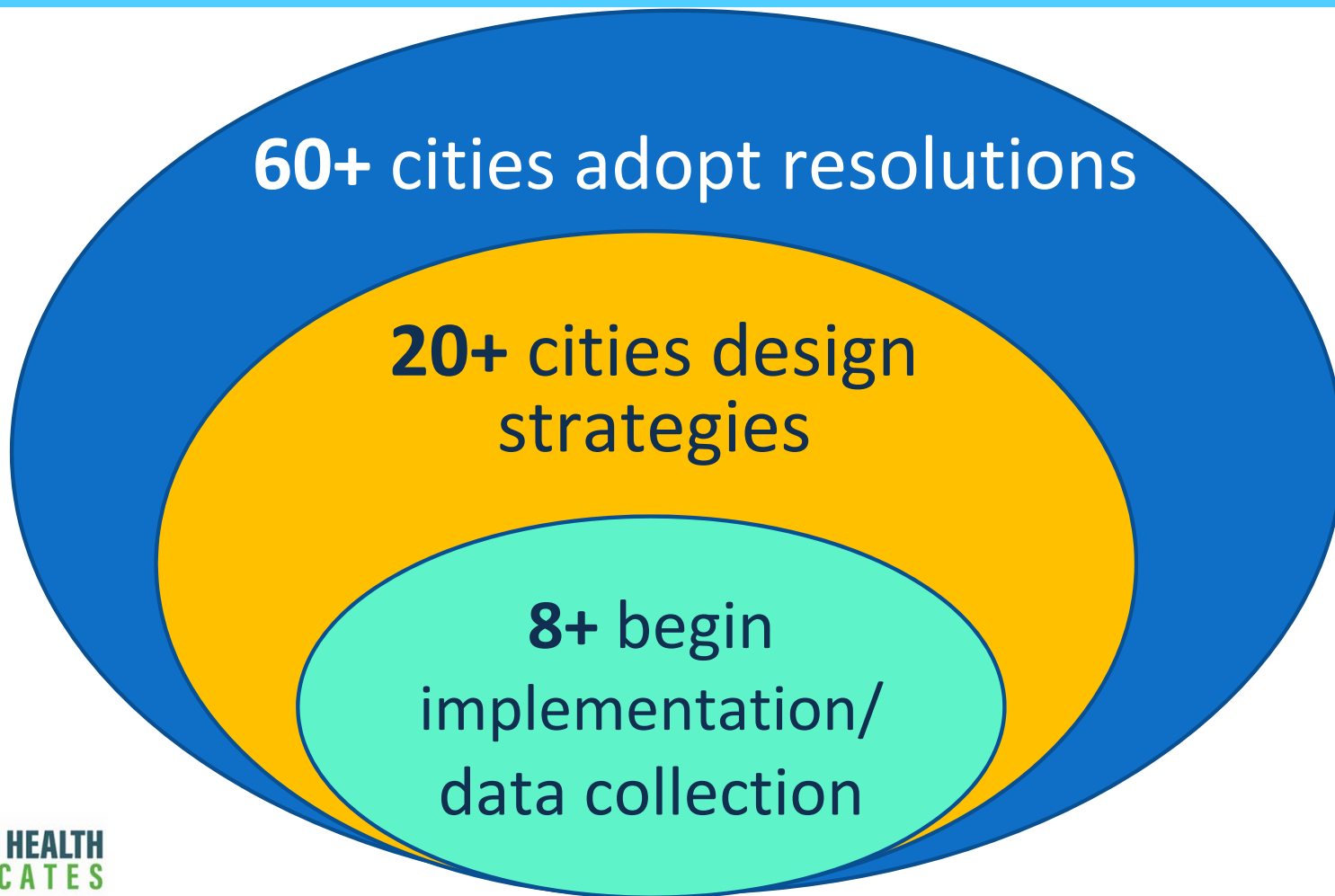


# ACT-CA Components



Establish an ACT-CA Equity  
Advisory Group

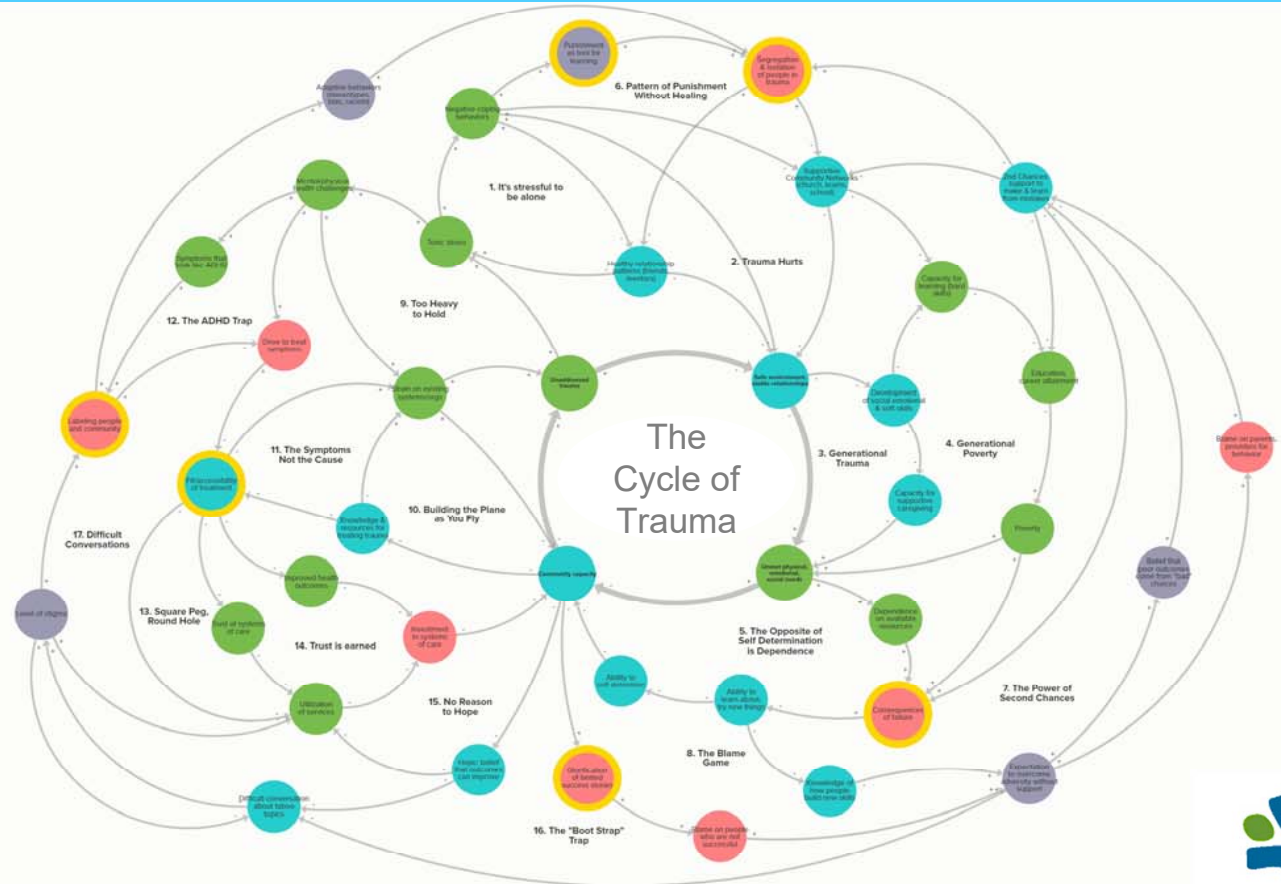
# 3-Year Goal – City Engagement



# Building Resilience in Rural Eastern North Carolina

## Legend

- Opposite
- Forces that heal
- Unexamined Beliefs
- Unexamined Responses
- Indicators of Health
- Bias/racism



## Questions for Attendees

We'll be looking at local models of promising practices and evidenced-based interventions. Would you be willing to send us information about local programs that fit these goals?

We are looking for transformative and disruptive ideas that can dramatically improve the lives of the next generation. Do you have a “big idea” policy suggestion?

# THANK YOU



**Reggie Caldwell, LCSW**

Regional Program Manager  
RC@phadvocates.org



**Kaytie Speziale, MA**

Regional Program Manager  
Kspeziale@phadvocates.org