



START-ODS
SYSTEM TRANSFORMATION TO ADVANCE RECOVERY AND TREATMENT

Los Angeles County's Substance Use Disorder Organized Delivery System

***SUBSTANCE USE DISORDER
SERVICE DELIVERY SYSTEM
TRANSFORMATION***

*Presented by: John M. Connolly, Ph.D., M.S.Ed.
Interim Director*

*Los Angeles County – Health Agency
Department of Public Health
Substance Abuse Prevention and Control (SAPC)*



START-ODS

SYSTEM TRANSFORMATION TO ADVANCE RECOVERY AND TREATMENT

Los Angeles County's Substance Use Disorder Organized Delivery System

The Drug Medi-Cal Organized Delivery System (DMC-ODS) Waiver is the greatest opportunity in recent history to design and implement an SUD system of care that has the financial and clinical resources to more fully address the complex and varied needs of individuals with SUDs.



Benefits

START-ODS expands the available services to patients in order to create a fuller continuum of care.

Old DMC-SUD System

- Outpatient
- Intensive Outpatient
- Residential (Perinatal Patients Only)
- Opioid Treatment Program

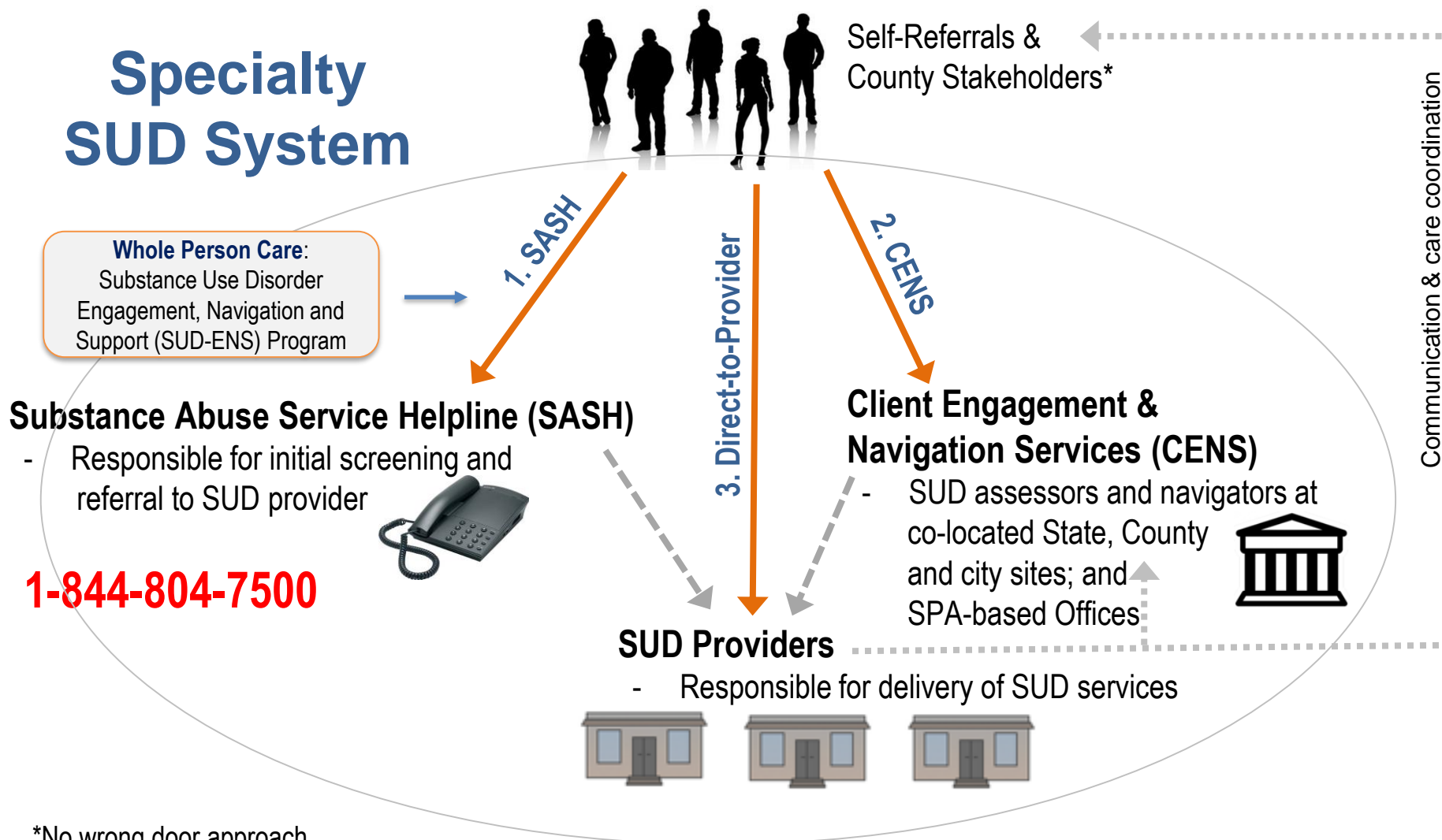
- Individual Sessions (Crisis Only)
- Group Sessions

New DMC-SUD System for Youth and Adults

- Outpatient
- Intensive Outpatient
- Residential (All Populations – 3 Levels of Care)
- Opioid Treatment Program
- Additional Medication-Assisted Treatment
- Withdrawal Management (Detox)

- Individual Sessions (No Limits)
- Group Sessions
- Family Therapy
- Case Management/Care Coordination
- Recovery Support Services
- Field-Based Services
- Recovery Bridge Housing

MAIN ENTRYWAYS INTO THE SPECIALTY SUD SYSTEM



*No wrong door approach



Service & Bed Availability Tool (SBAT):

<http://sapccis.ph.lacounty.gov/sbat/>

HOME

ABOUT BEGIN SEARCH CONTACT

FIND AVAILABLE SUBSTANCE USE SERVICES NEAR YOU

- **Option 1:** If you want to speak to someone directly to access services, call the Substance Abuse Service Helpline (SASH) at 844-804-7500
- **Option 2:** If you want to identify substance use services online [CLICK FOR INSTRUCTIONS](#)
- **Option 3:** Search by agency name

Starting Location:

Enter a location (Default: Los Angeles County, CA)

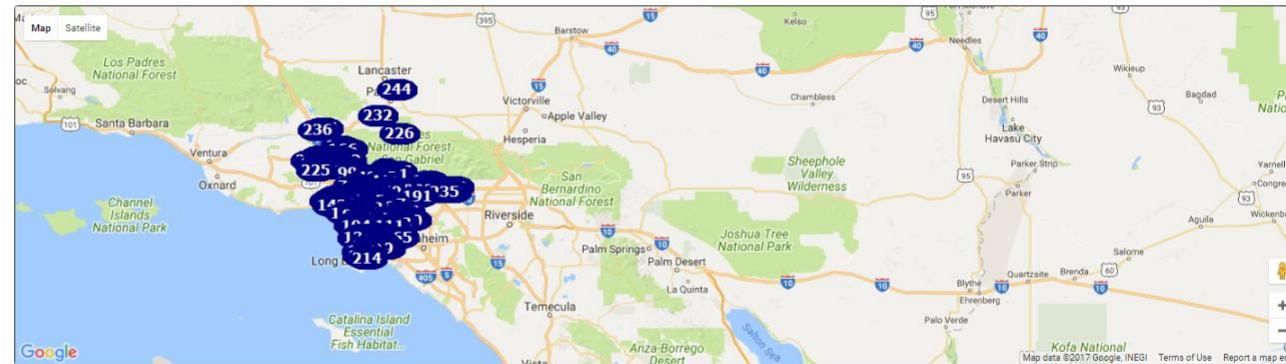
5 miles

SEARCH

Filter by:

TREATMENT/SERVICE TYPE: ▾

- Outpatient Treatment, Level 1 (OP) ?
- Intensive Outpatient, Level 2.1 (IOP) ?
- Residential Treatment, Levels 3.1 & 3.5 (RS) ?
 - RS (Levels 3.1 & 3.5) - Male
 - RS (Levels 3.1 & 3.5) - Female
- Residential Population-Specific Treatment, Level 3.3 (RS) ?
 - PSRS (Levels 3.1 & 3.5) - Male
 - PSRS (Levels 3.1 & 3.5) - Female
- Ambulatory - Withdrawal Management, Levels 1-WM & 2-WM (A-WM) ?
 - Residential - Withdrawal Management, Level 3.2-WM (R-WM) ?
 - R-WM - Male
 - R-WM - Female
- Inpatient - Withdrawal Management, Levels 3.7-WM & 4-WM (I-WM) ?
 - I-WM - Male
 - I-WM - Female
- Opioid Treatment Program (OTP) ?
- Recovery Bridge Housing (RBH) ?
 - RBH - Male
 - RBH - Female



Agency	Available Beds	Intake Appointment	Specific Service Type	Languages Spoken
1 0.42miles 2 LOS ANGELES CENTERS FOR ALCOHOL AND DRUG ABUSE 470 East 3rd Street, Suites A & B Los Angeles, CA 90013 Business Hours: Sun: Closed; Mon - Thu: 7:30 am - 7:30 pm; Fri: 7:30 am - 4:30 am; Sat: 7:00 am - 3:30 am Phone number: (213) 626-6411		OP IOP ?	Adult, Co-Occurring Mental Health Capabilities, Court Diversion, Probation/Parole, Re-entry, Homeless, LGBTQ, Older Adults, Parent/Guardian (Female) with Children, Sexually-Exploited, Veterans, Young Adults	English, Spanish



MAT in Correctional Health Services and during Re-entry

- **Jail-based addiction medicine service include access to SUD Treatment and Reentry Transition (START), and SUD treatment and medications to treat addiction**
- **Must meet clinical criteria for SUD, be enrolled in the Education Based Incarceration (EBI) program, and have a minimum of 45 days in-custody**
- **Participation is voluntary unless mandated by the courts, men and women can self-refer or be referred by the criminal justice system, and by correctional health and mental health clinicians**



MAT in Correctional Health Services and during Re-entry

- **Evidenced-based practices: cognitive behavioral therapy, motivational interviewing, addressing criminal thinking, trauma-informed care, as well as coping and relapse prevention skills.**
- **Up to 9 hours of treatment per week: group and individual counseling, case management, re-entry planning and care coordination for medication assisted treatment (MAT) and SUD treatment post release.**
- **Housing dormitory physically separates participants from the general population in a modified therapeutic community resembling a sober living home.**
- **Treatment activities also include panels from the 12-Step community (Alcoholics Anonymous and Narcotics Anonymous)**



MAT in Correctional Health Services and during Re-entry

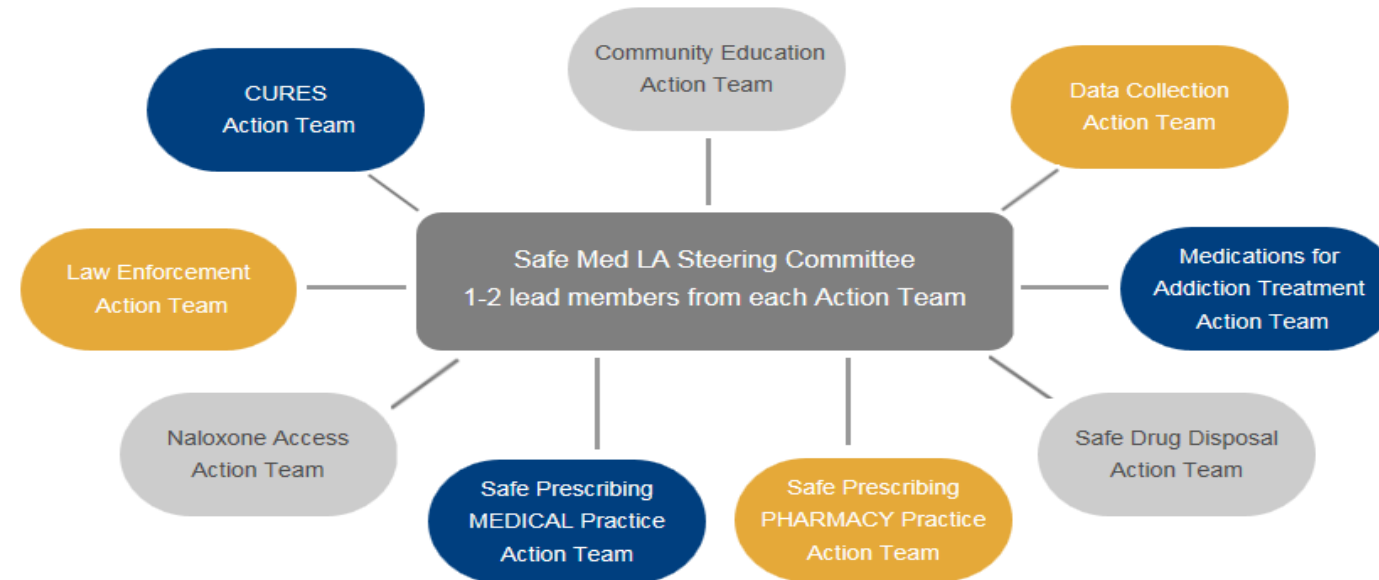
- **Naltrexone added to the LASD/DHS formulary in May 2016—oral naltrexone initiated in custody and long-acting injection (Vivitrol) administered just prior to release**
- **Buprenorphine and Naloxone were added to the formulary in March 2017**
- **Provides buprenorphine to pregnant women for opioid dependence, and planning to expand use to manage opioid withdrawal during incarceration — offer to re-initiate buprenorphine upon release**
- **Inmates at risk of opioid overdose post-release are trained in overdose prevention, recognition, and response with rescue breathing; and planning to provide Naloxone**



SAFE MED LA

Working Together to Reduce Prescription Drug Abuse and Overdose Deaths

Action Teams



The Safe Med LA coalition includes County health agencies (e.g., Departments of Health Services, Mental Health, and Public Health), health plans, physicians, pharmacists, substance use providers, law enforcement, medical associations, hospitals, community clinics, prevention coalitions, educators, and other community stakeholders. It is comprised of a lead Steering Committee and various goal-specific Action Teams that focus on the 6 priorities and 10 key objectives of the strategic plan.



Medications for Addiction Treatment Action Team

Priority Area II: Treatment and Overdose Prevention

KEY OBJECTIVE 4: EXPAND ACCESS TO MEDICATIONS FOR ADDICTION TREATMENT FOR INDIVIDUALS DEPENDENT ON OPIOIDS

The use of psychosocial interventions in conjunction with medications approved by the Food and Drug Administration (FDA) for the treatment of addictions is an evidence-based intervention in cases of prescription drug abuse. However, the availability of these Medications for Addiction Treatment (MAT) has been limited by several factors, some of which include a shortage of qualified prescribers, a lack of knowledge about these options by patients and treatment programs, cultural resistance to the use of MAT, as well as financial and regulatory challenges.

The Medications for Addiction Treatment Action Team will:

- ▶ Engage various provider groups, including but not limited to primary care, mental health, and addiction clinicians to increase the number of prescribers who are certified and competent in prescribing MAT. A particular area of focus will be increasing the number of prescribers with expertise in using buprenorphine and naltrexone for substance use disorders.
- ▶ Conduct buprenorphine and naltrexone training events, workshops, webinars, mentorship opportunities, and other methods of effectively influencing clinical practice. Targeting organizations/agencies committed to expanding MAT will facilitate continued sustainability of these efforts.

SMART Goals:

- Increase number of buprenorphine waived prescribers in LAC by 40 by April 2017, and 160 by 2020.
- Increase number of buprenorphine claims in the Medi-Cal system to 10,000 in LAC by April 2017, and 50,000 by 2020.



Current Los Angeles County Efforts related to OUD and MAT

- **A regional training plan to support SUD providers' ability to consistently offer MAT as a service option to all patients with OUDs**
- **Facilitate additional MAT "spokes", inclusive of Federally Qualified Health Centers, as a part of California's H&SS Grant**
- **Secure sustainable funding for naloxone for first responders**
- **Expand County hospitals' ED-based MAT capacity with a focus on buprenorphine, long-acting naltrexone, and naloxone; b) facilitate the linkage of ED patients to DHS and community based SUD treatment;**
- **Expand the availability of MAT across all Health Agency sites**
- **Increase the number of X-waivered buprenorphine prescribers working in EDs and health centers across the County**